

GENERAL SOCIAL SURVEY  
FINAL REPORT

Trends in Psychological Well-Being,  
1972-2014

APRIL 2015

PRESENTED BY:  
NORC at the  
University of Chicago  
55 East Monroe Street  
30th Floor  
Chicago, IL 60603  
(312) 759-4000  
(312) 759-4004

Tom W. Smith  
Jaesok Son  
Benjamin Schapiro



*at the* UNIVERSITY of CHICAGO

## List of Tables

<b>General Trends.....</b>	<b>1</b>
<b>Trends by Selective Sociodemographics.....</b>	<b>1</b>
<b>Appendix 1: Question Wordings.....</b>	<b>58</b>

## List of Tables

<b>Table 1. GENERAL HAPPINESS .....</b>	<b>4</b>
<b>Table 2. HAPPINESS OF MARRIAGE .....</b>	<b>5</b>
<b>Table 3. SATISFACTION WITH FINANCIAL SITUATION .....</b>	<b>6</b>
<b>Table 4. JOB OR HOUSEWORK.....</b>	<b>7</b>
<b>Table 5. IS LIFE EXCITING OR DULL .....</b>	<b>8</b>
<b>Table 6. GENERAL HAPPINESS .....</b>	<b>9</b>
<b>Table 7. HAPPINESS OF MARRIAGE .....</b>	<b>11</b>
<b>Table 8. SATISFACTION WITH FINANCIAL SITUATION .....</b>	<b>13</b>
<b>Table 9. JOB OR HOUSEWORK.....</b>	<b>15</b>
<b>Table 10. IS LIFE EXCITING OR DULL .....</b>	<b>17</b>
<b>Table 11. GENERAL HAPPINESS .....</b>	<b>19</b>
<b>Table 12. HAPPINESS OF MARRIAGE .....</b>	<b>23</b>
<b>Table 13. SATISFACTION WITH FINANCIAL SITUATION .....</b>	<b>27</b>
<b>Table 14. JOB OR HOUSEWORK.....</b>	<b>31</b>
<b>Table 15. IS LIFE EXCITING OR DULL .....</b>	<b>35</b>
<b>Table 16. GENERAL HAPPINESS .....</b>	<b>38</b>
<b>Table 17. HAPPINESS OF MARRIAGE .....</b>	<b>41</b>
<b>Table 18. SATISFACTION WITH FINANCIAL SITUATION .....</b>	<b>44</b>
<b>Table 19. JOB OR HOUSEWORK.....</b>	<b>47</b>
<b>Table 20. IS LIFE EXCITING OR DULL .....</b>	<b>50</b>

# List of Figures

**Figure 1.** TRENDS IN GENERAL HAPPINESS .....53

**Figure 2.** TRENDS IN MARITAL HAPPINESS.....54

**Figure 3.** TRENDS IN FINANCIAL SATISFACTION .....55

**Figure 4.** TRENDS IN JOB SATISFACTION.....56

**Figure 5.** TRENDS IN LIFE SATISFACTION .....57

## General Trends

Psychological well-being has shown mixed changes during recovery from the Great Recession. As Figure 1 shows, general happiness is up from a historical low in 2010 of 28.8% saying they are very happy to 32.5% being very happy in 2014 (+3.7 percentage points). (For the wording of this and all other questions, see Appendix 1: Question Wordings. For full percentages for all years, see the attached tables.) The 2014 happiness level was near the 1972-2014 average for overall happiness of 33.3%. Marital happiness did not dip during the economic downturn, but showed a notable decrease in 2014 when only 59.9% were very happy (Figure 2). That was a decline of 3.1 points from 2010. Financial satisfaction did fall during the recession and has moved upwards to 27.0% being satisfied in both 2012 and 2014 (+3.7 points over 2010), but that was still below the long-term average of 29.6% satisfied with their financial situation (Figure 3). Satisfaction with one's work changed little during the Great Recession. In 2014, being very or moderately satisfied was up marginally (+0.4 points), with 86.4% satisfied from 2010. Job satisfaction has been the most stable of all psychological well-being measures over time (Figure 4). Finding life "exciting" rather than "routine" or "dull" showed no recession-related decrease. It has risen over the years, with the share describing life as "exciting" climbing from an average of 44.8% in the 1970s to 52.1% in 2010-2014 (Figure 5).

Positive assessments in one area of life are associated with higher ratings in other domains. For example, in 2010-2014, 71.9% of those who are very happy said their lives were exciting, and this fell to 44.1% for those pretty happy and to 28.7% for those not too happy. Similarly, among the married, marital happiness is a major driver of general happiness. In 2010-2014, among those very happy in their marriages, 58.5% were also very happy overall. Among those with pretty-happy marriages, only 12.2% were very happy in general. Among the few with not-too-happy marriages, 8.1% were very happy overall and 49.2% were also not too happy in general.

## Trends by Selective Sociodemographics

Women and men usually differ little in their psychological well-being. In 2014, 33.5% of women and 31.3% of men said they were very happy overall. This +2.2 point edge (i.e., 33.5% for women - 31.3% for men = +2.2 points gender difference) was slightly above the long-term difference of +1.9 points. For marital happiness, the gender differences reverse direction. In 2014, 57.4% of married women said their marriages were very happy as did 62.8% of men (-5.4 points). The long-term average was smaller at -3.6 points. On financial satisfaction, men again modestly led women (by -2.0 points in 2014 and -1.2 points

across all years). On job satisfaction, women marginally outscored men in 2014, but across all years, women and men did not differ on job satisfaction. Only on excitement do meaningful gender differences usually appear. In 2014, 54.9% of men and 48.4% of women said their lives were exciting (-6.5 points). Across all years, the overall average was -5.6 points.

General happiness usually rises with age. Across all years among those 18-34, 30.2% were very happy, and this rose to 32.7% for those 35-49, 35.3% for those 50-65, and to 38.5% for those 65+. The pattern was similar in 2014. On average, marital happiness is lowest among those 35-49 (60.4% very happy) and highest among those 65+ (66.8% very happy). But, in 2014 the usual age pattern did not appear and marital happiness was greatest among those under 35 (65.2% very happy) and lowest among those 50-64 (57.5% very happy). Financial satisfaction strongly increases with age. Across all years, 23.9% of those under 35 were satisfied with their financial situation, and that rose to 26.5% for those 35-49, 33.0% for those 50-64, and 43.9% for those 65+; a gain of +20.0 points across age groups from the youngest to the oldest. In 2014, the overall age gap was +21.0 points. Job satisfaction also rises with age. Across all years, those satisfied with their work increased from 82.6% for those 18-34, to 86.9% for 35-49, to 89.4% for 50-64, and to 93.0% for those 65+ for a gain of +10.4 points across age groups. In contrast to financial and job satisfaction, ratings of excitement fall with age. Across all years, those describing their lives as exciting fell from 50.4% for 18-34 year olds, to 48.6% for 35-49, to 46.2% for 50-64, and to 41.3% for those 65+. But counter to this long-term pattern, in 2014 those 65+ were the most likely to say their lives were exciting (53.7%), and this was the first time they clearly held the top spot across age groups.

Psychological well-being is greater among the better educated for all measures. However, the size of the education gap varies both across measures and within measures across time. The difference on general and marital happiness has been moderate in size and fairly stable across years. In 2014, 27.5% of those with less than a high school degree were very happy in general, as were 29.4% of high school graduates and 38.6% of those who attended college (+11.1 points). In 2014, on marital happiness, the rise in being very happy across educational levels was +12.2 points. For financial and job satisfactions, the educational gaps are large. Overall financial satisfaction was at 27.5% for those without any degrees, 27.1% for high school graduates, and 36.7% for those who attended college (+9.2 points). In 2014, the education gap was +16.4 points. Likewise, across all years, job satisfaction rose across educational levels from 84.0% to 85.5% to 89.1% (+5.1 points), but in 2014, it increased from 77.6% to 85.9% to 89.6% (+12.0 points). Across all years, ratings of life as exciting ranged from 34.2% for those without degrees, to 46.0% for high school graduates, to 62.0% for college attenders (+27.8 points). But in recent years, the difference has diminished, and in 2012 the educational gaps ran from 48.7% to 49.6% to 58.4% (+9.7 points). However, in 2014 a more typical pattern re-emerged with the education gap in excitement at +27.6 points.

The data in this report are from the General Social Survey (GSS). The GSSs are full probability, in-person samples of adults living in households in the United States. Data have been collected by NORC at the University of Chicago. Core support for the GSS comes from the National Science Foundation. Information on the GSS and the GSS data files is available at <http://www3.norc.org/GSS+Website>.

**Table 1.** GENERAL HAPPINESS

SURVEY YEAR	VERY HAPPY	PRETTY HAPPY	NOT TOO HAPPY	Total
1972	29.7%	53.0%	17.2%	1605
1973	36.8%	50.9%	12.3%	1501
1974	38.3%	49.2%	12.5%	1479
1975	33.4%	53.6%	13.0%	1484
1976	34.8%	52.9%	12.2%	1499
1977	35.7%	53.2%	11.0%	1528
1978	35.5%	56.2%	8.4%	1519
1980	35.3%	52.6%	12.1%	1462
1982	34.8%	53.5%	11.7%	1505
1983	31.7%	56.2%	12.1%	1570
1984	36.3%	52.1%	11.6%	1447
1985	29.6%	59.9%	10.5%	1531
1986	33.2%	56.6%	10.2%	1450
1987	33.5%	55.0%	11.5%	1438
1988	36.1%	55.7%	8.2%	1470
1989	34.5%	56.7%	8.8%	1528
1990	35.7%	56.5%	7.7%	1359
1991	32.5%	58.0%	9.5%	1506
1993	33.4%	56.9%	9.7%	1601
1994	30.5%	58.2%	11.3%	2978
1996	32.1%	57.4%	10.5%	2887
1998	33.3%	55.9%	10.9%	2807
2000	33.9%	56.4%	9.6%	2785
2002	32.9%	55.8%	11.3%	1364
2004	33.6%	54.7%	11.7%	1326
2006	32.4%	55.9%	11.7%	2990
2008	31.7%	54.4%	13.9%	2016
2010	28.8%	57.0%	14.2%	2038
2012	32.9%	54.2%	12.9%	1965
2014	32.5%	55.3%	12.2%	2531
Total	33.3%	55.4%	11.4%	54172

**Table 2.** HAPPINESS OF MARRIAGE

SURVEY YEAR	VERY HAPPY	PRETTY HAPPY	NOT TOO HAPPY	Total
1973	67.2%	30.0%	2.8%	1108
1974	68.8%	27.2%	4.0%	1107
1975	67.4%	29.7%	2.9%	1061
1976	66.1%	31.3%	2.7%	1044
1977	65.3%	31.1%	3.6%	1051
1978	65.5%	31.8%	2.6%	1071
1980	67.5%	29.7%	2.8%	980
1982	66.3%	30.6%	3.0%	965
1983	62.5%	34.3%	3.2%	1067
1984	66.4%	30.8%	2.8%	933
1985	56.0%	40.7%	3.3%	984
1986	63.2%	33.3%	3.5%	918
1987	65.4%	32.4%	2.2%	887
1988	62.0%	34.5%	3.5%	885
1989	60.3%	37.4%	2.3%	940
1990	64.6%	33.3%	2.1%	830
1991	63.6%	33.2%	3.2%	921
1993	61.3%	36.0%	2.7%	977
1994	60.4%	36.8%	2.7%	1793
1996	61.9%	36.0%	2.0%	1633
1998	63.6%	33.7%	2.7%	1577
2000	62.4%	34.4%	3.2%	1499
2002	60.2%	37.2%	2.7%	713
2004	61.8%	35.0%	3.1%	778
2006	60.7%	37.1%	2.3%	1656
2008	62.1%	35.3%	2.6%	1138
2010	63.0%	34.3%	2.6%	1048
2012	65.4%	32.2%	2.3%	1030
2014	59.9%	36.6%	3.5%	1336
Total	63.3%	33.8%	2.9%	31930



**Table 3.** SATISFACTION WITH FINANCIAL SITUATION

SURVEY YEAR	SATISFIED	MORE OR LESS	NOT AT ALL SAT	Total
1972	32.2%	45.2%	22.6%	1610
1973	31.7%	45.3%	23.0%	1502
1974	31.2%	45.9%	23.0%	1478
1975	31.3%	42.8%	25.8%	1479
1976	30.9%	45.7%	23.4%	1492
1977	34.9%	44.4%	20.7%	1521
1978	34.4%	41.8%	23.8%	1530
1980	28.2%	45.5%	26.3%	1461
1982	26.6%	46.6%	26.7%	1499
1983	29.0%	41.4%	29.6%	1592
1984	28.4%	46.6%	25.0%	1462
1985	29.9%	44.7%	25.4%	1524
1986	31.4%	42.7%	25.9%	1466
1987	30.1%	48.6%	21.4%	1463
1988	30.7%	46.3%	23.0%	1472
1989	30.7%	44.7%	24.6%	1532
1990	30.3%	42.7%	26.9%	1366
1991	28.1%	46.9%	25.0%	1507
1993	27.3%	45.5%	27.2%	1596
1994	28.6%	46.4%	24.9%	2976
1996	27.9%	44.6%	27.5%	2897
1998	30.6%	44.3%	25.1%	2823
2000	30.6%	45.4%	24.0%	2804
2002	30.6%	42.2%	27.1%	1363
2004	33.1%	42.3%	24.5%	1323
2006	30.1%	45.5%	24.5%	2984
2008	28.9%	41.7%	29.4%	2016
2010	23.3%	45.2%	31.5%	2037
2012	27.0%	45.0%	28.0%	1969
2014	27.0%	46.6%	26.4%	2530
Total	29.6%	44.8%	25.5%	54275

**Table 4. JOB OR HOUSEWORK**

SURVEY YEAR	VERY SATISFIED	MOD. SATISFIED	A LITTLE DISSAT	VERY DISSATISFIED	Total
1972	48.3%	36.5%	11.8%	3.4%	952
1973	49.2%	39.0%	7.5%	4.3%	1143
1974	47.6%	38.1%	9.7%	4.6%	1231
1975	53.8%	33.1%	9.2%	3.9%	1173
1976	50.7%	35.4%	9.6%	4.4%	1193
1977	47.0%	39.7%	10.5%	2.8%	1269
1978	51.2%	35.7%	8.6%	4.6%	1300
1980	47.1%	36.2%	12.1%	4.6%	1263
1982	46.7%	38.2%	10.1%	5.0%	1242
1983	48.9%	37.7%	8.7%	4.6%	1346
1984	46.7%	34.8%	11.9%	6.6%	1221
1985	47.4%	38.6%	9.8%	4.2%	1253
1986	49.2%	39.2%	8.9%	2.7%	1193
1987	43.9%	38.8%	12.7%	4.5%	1193
1988	46.1%	39.6%	10.3%	4.0%	1174
1989	46.3%	39.3%	10.4%	4.0%	1228
1990	46.2%	39.8%	10.4%	3.7%	1073
1991	44.8%	41.7%	9.5%	4.0%	1183
1993	43.4%	40.8%	10.8%	5.0%	1260
1994	45.6%	40.5%	10.6%	3.3%	2386
1996	44.9%	40.4%	10.6%	4.1%	2370
1998	48.4%	38.7%	9.7%	3.2%	2278
2000	45.5%	43.2%	8.2%	3.1%	2209
2002	50.8%	36.5%	9.2%	3.5%	1065
2004	50.9%	36.1%	8.6%	4.4%	1420
2006	49.4%	38.3%	8.2%	4.0%	2252
2008	51.5%	36.3%	9.1%	3.1%	1598
2010	49.8%	36.2%	10.3%	3.7%	1568
2012	50.5%	37.1%	9.0%	3.4%	1525
2014	48.9%	37.5%	8.8%	4.8%	1943
Total	47.9%	38.3%	9.7%	4.0%	43506

**Table 5.** IS LIFE EXCITING OR DULL

SURVEY YEAR	EXCITING	ROUTINE	DULL	Total
1973	46.2%	49.0%	4.8%	1485
1974	43.5%	52.0%	4.5%	1444
1976	45.1%	51.7%	3.3%	1477
1977	44.4%	49.2%	6.4%	1500
1980	46.6%	48.1%	5.3%	1463
1982	45.5%	49.6%	4.9%	1497
1984	47.3%	48.4%	4.3%	1461
1985	47.6%	46.5%	5.9%	1519
1987	45.7%	50.8%	3.5%	1430
1988	46.4%	49.2%	4.4%	954
1989	45.0%	50.2%	4.8%	1021
1990	45.1%	50.8%	4.1%	900
1991	44.8%	52.0%	3.1%	983
1993	47.3%	47.3%	5.4%	1058
1994	48.2%	48.3%	3.5%	2009
1996	50.9%	45.3%	3.8%	1898
1998	45.2%	49.9%	4.9%	1869
2000	46.6%	49.1%	4.3%	1841
2002	52.3%	44.2%	3.5%	911
2004	49.6%	47.0%	3.4%	870
2006	51.2%	43.9%	4.9%	1970
2008	47.6%	48.5%	3.8%	1344
2010	52.1%	43.3%	4.6%	1264
2012	52.7%	42.6%	4.7%	1293
2014	51.4%	44.3%	4.3%	1711
Total	47.6%	48.0%	4.4%	35173

**Table 6. GENERAL HAPPINESS**

SURVEY YEAR	SEX	VERY HAPPY	PRETTY HAPPY	NOT TOO HAPPY	Total
1972	MALE	27.0%	53.9%	19.0%	847
	FEMALE	32.7%	52.1%	15.2%	758
1973	MALE	34.5%	53.4%	12.0%	719
	FEMALE	38.9%	48.6%	12.5%	782
1974	MALE	34.6%	51.5%	13.9%	717
	FEMALE	41.8%	47.0%	11.2%	762
1975	MALE	32.1%	55.9%	12.0%	691
	FEMALE	34.5%	51.6%	13.8%	793
1976	MALE	32.8%	54.3%	13.0%	696
	FEMALE	36.6%	51.8%	11.6%	803
1977	MALE	32.5%	57.4%	10.1%	711
	FEMALE	38.5%	49.7%	11.8%	817
1978	MALE	35.3%	55.6%	9.1%	659
	FEMALE	35.6%	56.6%	7.8%	861
1980	MALE	32.3%	54.9%	12.8%	653
	FEMALE	37.7%	50.8%	11.6%	809
1982	MALE	32.3%	55.2%	12.4%	673
	FEMALE	36.8%	52.1%	11.1%	832
1983	MALE	31.8%	56.2%	12.1%	701
	FEMALE	31.6%	56.3%	12.1%	869
1984	MALE	33.3%	53.8%	12.9%	612
	FEMALE	38.5%	50.8%	10.6%	835
1985	MALE	30.3%	59.5%	10.2%	721
	FEMALE	29.0%	60.3%	10.7%	810
1986	MALE	31.6%	57.2%	11.2%	641
	FEMALE	34.5%	56.1%	9.4%	810
1987	MALE	32.7%	54.8%	12.5%	649
	FEMALE	34.3%	55.2%	10.6%	789
1988	MALE	36.7%	56.7%	6.6%	663
	FEMALE	35.6%	54.8%	9.6%	807
1989	MALE	33.9%	57.6%	8.6%	691
	FEMALE	35.0%	56.0%	9.0%	837
1990	MALE	35.7%	56.4%	7.9%	618
	FEMALE	35.8%	56.6%	7.6%	741
1991	MALE	33.5%	58.6%	7.9%	668
	FEMALE	31.7%	57.5%	10.8%	839
1993	MALE	30.0%	60.9%	9.1%	712
	FEMALE	36.1%	53.6%	10.3%	889
1994	MALE	31.3%	57.6%	11.1%	1354
	FEMALE	29.9%	58.7%	11.4%	1624

SURVEY YEAR	SEX	VERY HAPPY	PRETTY HAPPY	NOT TOO HAPPY	Total
1996	MALE	32.7%	57.0%	10.3%	1354
	FEMALE	31.6%	57.7%	10.7%	1533
1998	MALE	32.0%	57.7%	10.4%	1261
	FEMALE	34.3%	54.4%	11.3%	1546
2000	MALE	33.4%	57.1%	9.5%	1262
	FEMALE	34.4%	55.9%	9.7%	1523
2002	MALE	35.3%	56.0%	8.7%	670
	FEMALE	30.5%	55.7%	13.7%	694
2004	MALE	31.9%	53.9%	14.2%	633
	FEMALE	35.1%	55.5%	9.4%	693
2006	MALE	32.1%	57.0%	10.9%	1342
	FEMALE	32.6%	55.0%	12.4%	1649
2008	MALE	30.5%	55.8%	13.7%	947
	FEMALE	32.6%	53.2%	14.2%	1069
2010	MALE	27.2%	57.2%	15.6%	922
	FEMALE	30.1%	56.9%	13.0%	1115
2012	MALE	31.5%	55.7%	12.9%	908
	FEMALE	34.2%	52.9%	12.9%	1057
2014	MALE	31.3%	55.2%	13.5%	1149
	FEMALE	33.5%	55.5%	11.1%	1381
Total	MALE	32.2%	56.3%	11.5%	24846
	FEMALE	34.1%	54.6%	11.3%	29326

**Table 7.** HAPPINESS OF MARRIAGE

SURVEY YEAR	SEX	VERY HAPPY	PRETTY HAPPY	NOT TOO HAPPY	Total
1973	MALE	68.4%	29.5%	2.1%	526
	FEMALE	66.1%	30.4%	3.5%	582
1974	MALE	69.3%	27.9%	2.8%	537
	FEMALE	68.4%	26.5%	5.2%	570
1975	MALE	70.9%	27.6%	1.6%	509
	FEMALE	64.2%	31.7%	4.1%	552
1976	MALE	68.5%	29.7%	1.7%	478
	FEMALE	64.0%	32.5%	3.4%	566
1977	MALE	68.7%	29.5%	1.8%	500
	FEMALE	62.2%	32.5%	5.3%	551
1978	MALE	66.0%	31.9%	2.1%	503
	FEMALE	65.1%	31.8%	3.1%	568
1980	MALE	70.2%	27.7%	2.1%	465
	FEMALE	65.0%	31.6%	3.5%	515
1982	MALE	66.9%	32.2%	.9%	456
	FEMALE	65.8%	29.2%	5.0%	509
1983	MALE	65.6%	31.7%	2.7%	508
	FEMALE	59.7%	36.7%	3.6%	558
1984	MALE	66.4%	31.5%	2.0%	404
	FEMALE	66.3%	30.3%	3.4%	529
1985	MALE	58.0%	38.5%	3.5%	495
	FEMALE	54.0%	42.9%	3.2%	490
1986	MALE	61.3%	35.4%	3.3%	429
	FEMALE	64.9%	31.4%	3.7%	489
1987	MALE	68.9%	29.8%	1.3%	426
	FEMALE	62.1%	34.9%	3.1%	461
1988	MALE	65.1%	33.7%	1.3%	421
	FEMALE	59.2%	35.2%	5.6%	464
1989	MALE	64.6%	34.6%	.8%	446
	FEMALE	56.4%	40.0%	3.6%	494
1990	MALE	68.2%	30.6%	1.2%	406
	FEMALE	61.1%	35.9%	3.0%	423
1991	MALE	65.7%	31.6%	2.7%	427
	FEMALE	61.7%	34.7%	3.7%	493
1993	MALE	62.5%	34.7%	2.9%	462
	FEMALE	60.3%	37.3%	2.5%	515
1994	MALE	61.7%	36.7%	1.7%	852
	FEMALE	59.3%	36.9%	3.7%	941

SURVEY YEAR	SEX	VERY HAPPY	PRETTY HAPPY	NOT TOO HAPPY	Total
1996	MALE	64.5%	33.1%	2.4%	810
	FEMALE	59.4%	38.9%	1.6%	823
1998	MALE	64.0%	33.5%	2.4%	727
	FEMALE	63.2%	33.9%	2.9%	850
2000	MALE	64.0%	33.3%	2.7%	695
	FEMALE	61.1%	35.2%	3.7%	804
2002	MALE	67.3%	30.3%	2.4%	374
	FEMALE	52.3%	44.7%	3.0%	339
2004	MALE	62.2%	35.1%	2.7%	373
	FEMALE	61.5%	35.0%	3.5%	404
2006	MALE	63.3%	35.1%	1.6%	744
	FEMALE	58.5%	38.7%	2.8%	913
2008	MALE	64.1%	34.0%	1.9%	551
	FEMALE	60.2%	36.5%	3.3%	587
2010	MALE	62.2%	34.6%	3.1%	501
	FEMALE	63.8%	34.0%	2.2%	547
2012	MALE	66.4%	32.7%	.9%	481
	FEMALE	64.6%	31.8%	3.6%	549
2014	MALE	62.8%	34.8%	2.5%	631
	FEMALE	57.4%	38.2%	4.4%	705
Total	MALE	65.2%	32.7%	2.1%	15139
	FEMALE	61.6%	34.9%	3.5%	16791

**Table 8. SATISFACTION WITH FINANCIAL SITUATION**

SURVEY YEAR	SEX	SATISFIED	MORE OR LESS	NOT AT ALL SAT	Total
1972	MALE	30.2%	47.6%	22.2%	847
	FEMALE	34.4%	42.5%	23.0%	762
1973	MALE	31.3%	45.0%	23.8%	721
	FEMALE	32.0%	45.6%	22.3%	781
1974	MALE	31.9%	44.3%	23.8%	715
	FEMALE	30.5%	47.3%	22.2%	763
1975	MALE	32.0%	42.3%	25.6%	691
	FEMALE	30.8%	43.3%	26.0%	788
1976	MALE	30.7%	43.5%	25.8%	695
	FEMALE	31.0%	47.7%	21.3%	798
1977	MALE	34.6%	45.3%	20.0%	710
	FEMALE	35.1%	43.6%	21.3%	810
1978	MALE	36.4%	40.6%	23.0%	661
	FEMALE	32.8%	42.7%	24.5%	868
1980	MALE	28.8%	44.9%	26.3%	654
	FEMALE	27.7%	45.9%	26.4%	807
1982	MALE	26.7%	48.1%	25.1%	671
	FEMALE	26.5%	45.5%	28.1%	828
1983	MALE	28.5%	41.5%	30.0%	718
	FEMALE	29.3%	41.4%	29.3%	875
1984	MALE	28.6%	44.9%	26.5%	619
	FEMALE	28.2%	47.9%	23.9%	842
1985	MALE	31.1%	44.2%	24.7%	718
	FEMALE	28.9%	45.2%	25.9%	806
1986	MALE	31.9%	42.1%	26.1%	647
	FEMALE	31.1%	43.2%	25.7%	820
1987	MALE	31.3%	47.4%	21.3%	659
	FEMALE	29.1%	49.5%	21.4%	803
1988	MALE	31.2%	46.8%	21.9%	664
	FEMALE	30.4%	45.9%	23.8%	809
1989	MALE	30.8%	42.3%	26.9%	693
	FEMALE	30.7%	46.6%	22.7%	839
1990	MALE	31.4%	43.9%	24.7%	618
	FEMALE	29.4%	41.8%	28.8%	748
1991	MALE	32.0%	44.5%	23.6%	666
	FEMALE	25.0%	48.9%	26.2%	840
1993	MALE	26.3%	46.6%	27.2%	708
	FEMALE	28.2%	44.6%	27.2%	887



SURVEY YEAR	SEX	SATISFIED	MORE OR LESS	NOT AT ALL SAT	Total
1994	MALE	29.3%	46.6%	24.1%	1352
	FEMALE	28.1%	46.3%	25.6%	1624
1996	MALE	27.1%	47.9%	25.0%	1357
	FEMALE	28.6%	41.7%	29.7%	1540
1998	MALE	30.4%	44.9%	24.8%	1271
	FEMALE	30.8%	43.9%	25.3%	1552
2000	MALE	32.5%	45.3%	22.1%	1269
	FEMALE	29.0%	45.4%	25.6%	1535
2002	MALE	31.7%	43.7%	24.6%	670
	FEMALE	29.6%	40.8%	29.5%	693
2004	MALE	33.0%	44.2%	22.8%	634
	FEMALE	33.3%	40.6%	26.2%	689
2006	MALE	31.3%	45.7%	23.0%	1339
	FEMALE	29.1%	45.3%	25.6%	1645
2008	MALE	28.9%	42.6%	28.5%	948
	FEMALE	28.9%	40.8%	30.2%	1069
2010	MALE	23.5%	45.4%	31.1%	921
	FEMALE	23.2%	45.0%	31.8%	1116
2012	MALE	27.8%	45.8%	26.4%	909
	FEMALE	26.2%	44.3%	29.5%	1059
2014	MALE	28.1%	46.3%	25.6%	1149
	FEMALE	26.1%	46.9%	27.1%	1381
Total	MALE	30.1%	45.0%	24.9%	24899
	FEMALE	29.2%	44.7%	26.1%	29376

**Table 9. JOB OR HOUSEWORK**

SURVEY YEAR	SEX	VERY SATISFIED	MOD. SATISFIED	A LITTLE DISSAT	VERY DISSATISFIED	Total
1972	MALE	47.7%	36.5%	11.8%	4.1%	656
	FEMALE	49.8%	36.4%	11.8%	1.9%	297
1973	MALE	48.7%	37.0%	8.9%	5.4%	529
	FEMALE	49.6%	40.8%	6.3%	3.3%	614
1974	MALE	49.0%	37.6%	9.0%	4.4%	540
	FEMALE	46.5%	38.4%	10.3%	4.7%	691
1975	MALE	55.1%	34.3%	7.0%	3.7%	468
	FEMALE	53.0%	32.4%	10.6%	4.0%	706
1976	MALE	52.0%	34.5%	9.3%	4.2%	476
	FEMALE	49.8%	36.0%	9.7%	4.5%	718
1977	MALE	46.2%	40.1%	10.8%	3.0%	551
	FEMALE	47.7%	39.4%	10.3%	2.6%	718
1978	MALE	51.6%	35.8%	9.5%	3.1%	551
	FEMALE	50.9%	35.6%	7.9%	5.6%	749
1980	MALE	46.2%	38.1%	10.6%	5.1%	531
	FEMALE	47.8%	34.8%	13.2%	4.3%	732
1982	MALE	46.8%	38.2%	11.1%	3.9%	521
	FEMALE	46.6%	38.2%	9.4%	5.8%	721
1983	MALE	47.6%	37.5%	9.6%	5.3%	593
	FEMALE	50.0%	37.9%	8.0%	4.1%	753
1984	MALE	42.3%	37.8%	11.1%	8.7%	505
	FEMALE	49.8%	32.7%	12.4%	5.1%	716
1985	MALE	44.9%	39.7%	11.0%	4.4%	569
	FEMALE	49.4%	37.7%	8.9%	4.1%	684
1986	MALE	51.9%	38.0%	8.6%	1.6%	517
	FEMALE	47.1%	40.2%	9.1%	3.7%	676
1987	MALE	46.1%	37.1%	13.2%	3.7%	533
	FEMALE	42.2%	40.3%	12.4%	5.1%	660
1988	MALE	49.2%	38.2%	9.1%	3.5%	514
	FEMALE	43.7%	40.7%	11.3%	4.4%	659
1989	MALE	46.9%	37.4%	10.4%	5.3%	560
	FEMALE	45.8%	40.9%	10.4%	3.0%	668
1990	MALE	44.7%	41.6%	9.5%	4.2%	486
	FEMALE	47.4%	38.2%	11.1%	3.3%	588
1991	MALE	48.5%	40.9%	7.9%	2.7%	526
	FEMALE	41.9%	42.4%	10.8%	5.0%	657
1993	MALE	40.7%	43.7%	10.4%	5.2%	558
	FEMALE	45.6%	38.6%	11.1%	4.7%	701
1994	MALE	44.6%	40.4%	11.3%	3.7%	1071
	FEMALE	46.5%	40.5%	10.0%	3.0%	1315

SURVEY YEAR	SEX	VERY SATISFIED	MOD. SATISFIED	A LITTLE DISSAT	VERY DISSATISFIED	Total
1996	MALE	45.1%	40.9%	9.6%	4.3%	1137
	FEMALE	44.7%	40.0%	11.4%	3.9%	1233
1998	MALE	45.2%	40.3%	11.5%	3.0%	1028
	FEMALE	51.1%	37.3%	8.2%	3.4%	1250
2000	MALE	45.1%	44.8%	7.4%	2.6%	1018
	FEMALE	45.8%	41.9%	8.8%	3.5%	1191
2002	MALE	50.2%	38.0%	10.0%	1.8%	505
	FEMALE	51.3%	35.3%	8.4%	5.1%	560
2004	MALE	48.5%	38.3%	8.7%	4.5%	664
	FEMALE	52.9%	34.1%	8.6%	4.4%	756
2006	MALE	47.8%	40.2%	8.3%	3.7%	1018
	FEMALE	50.7%	36.8%	8.2%	4.3%	1234
2008	MALE	50.3%	37.0%	9.9%	2.7%	757
	FEMALE	52.6%	35.6%	8.4%	3.4%	841
2010	MALE	46.8%	41.2%	8.6%	3.3%	699
	FEMALE	52.1%	32.1%	11.7%	4.0%	869
2012	MALE	49.1%	38.1%	9.3%	3.5%	702
	FEMALE	51.7%	36.3%	8.6%	3.3%	823
2014	MALE	46.0%	40.3%	8.6%	5.1%	877
	FEMALE	51.3%	35.2%	9.0%	4.5%	1066
Total	MALE	47.2%	39.1%	9.7%	3.9%	19663
	FEMALE	48.5%	37.6%	9.8%	4.0%	23844

**Table 10.** IS LIFE EXCITING OR DULL

SURVEY YEAR	SEX	EXCITING	ROUTINE	DULL	Total
1973	MALE	49.0%	46.7%	4.3%	711
	FEMALE	43.5%	51.2%	5.3%	775
1974	MALE	47.8%	48.5%	3.7%	698
	FEMALE	39.5%	55.3%	5.2%	747
1976	MALE	47.6%	50.2%	2.2%	690
	FEMALE	42.9%	52.9%	4.2%	787
1977	MALE	46.4%	46.4%	7.1%	702
	FEMALE	42.6%	51.6%	5.8%	798
1980	MALE	50.2%	46.2%	3.6%	656
	FEMALE	43.7%	49.6%	6.7%	807
1982	MALE	49.0%	47.2%	3.9%	668
	FEMALE	42.6%	51.6%	5.8%	829
1984	MALE	49.9%	45.6%	4.6%	622
	FEMALE	45.4%	50.5%	4.1%	838
1985	MALE	51.0%	43.9%	5.1%	713
	FEMALE	44.5%	48.8%	6.7%	806
1987	MALE	48.2%	48.7%	3.1%	647
	FEMALE	43.6%	52.6%	3.8%	784
1988	MALE	52.6%	45.4%	2.0%	408
	FEMALE	41.7%	52.0%	6.2%	546
1989	MALE	46.6%	50.2%	3.2%	459
	FEMALE	43.6%	50.2%	6.2%	562
1990	MALE	49.3%	46.8%	3.9%	400
	FEMALE	41.7%	54.0%	4.2%	501
1991	MALE	50.3%	47.6%	2.1%	449
	FEMALE	40.3%	55.8%	4.0%	534
1993	MALE	47.8%	48.0%	4.2%	477
	FEMALE	46.9%	46.8%	6.4%	581
1994	MALE	49.2%	47.5%	3.3%	937
	FEMALE	47.4%	48.9%	3.7%	1072
1996	MALE	54.9%	41.2%	3.9%	885
	FEMALE	47.4%	49.0%	3.6%	1013
1998	MALE	48.2%	48.0%	3.8%	822
	FEMALE	42.9%	51.4%	5.8%	1047
2000	MALE	51.8%	44.4%	3.8%	848
	FEMALE	42.2%	53.1%	4.7%	994
2002	MALE	55.4%	41.7%	2.9%	515
	FEMALE	48.3%	47.5%	4.2%	396

SURVEY YEAR	SEX	EXCITING	ROUTINE	DULL	Total
2004	MALE	49.6%	46.1%	4.3%	406
	FEMALE	49.6%	47.7%	2.6%	464
2006	MALE	54.8%	41.8%	3.4%	890
	FEMALE	48.2%	45.7%	6.1%	1079
2008	MALE	48.9%	48.6%	2.5%	619
	FEMALE	46.5%	48.5%	5.0%	725
2010	MALE	54.0%	40.4%	5.7%	591
	FEMALE	50.4%	45.9%	3.7%	673
2012	MALE	55.9%	39.4%	4.7%	595
	FEMALE	50.0%	45.4%	4.7%	698
2014	MALE	54.9%	40.6%	4.5%	786
	FEMALE	48.4%	47.5%	4.1%	924
Total	MALE	50.6%	45.5%	3.9%	16193
	FEMALE	45.0%	50.1%	4.9%	18980

**Table 11. GENERAL HAPPINESS**

SURVEY YEAR	AGE	VERY HAPPY	PRETTY HAPPY	NOT TOO HAPPY	Total
1972	18-34	28.5%	55.4%	16.1%	576
	35-49	32.4%	50.3%	17.3%	428
	50-64	28.5%	53.8%	17.8%	395
	65+	29.7%	50.9%	19.4%	202
1973	18-34	31.7%	57.1%	11.2%	530
	35-49	37.9%	48.1%	13.9%	413
	50-64	42.0%	47.8%	10.2%	368
	65+	39.1%	45.2%	15.6%	187
1974	18-34	30.6%	54.3%	15.1%	537
	35-49	40.6%	47.9%	11.5%	380
	50-64	43.9%	44.6%	11.6%	339
	65+	45.0%	45.8%	9.2%	219
1975	18-34	28.1%	57.8%	14.1%	559
	35-49	34.0%	53.6%	12.4%	391
	50-64	36.0%	50.7%	13.3%	322
	65+	42.6%	47.1%	10.3%	209
1976	18-34	33.4%	53.4%	13.2%	578
	35-49	36.1%	55.9%	8.0%	344
	50-64	33.4%	53.4%	13.2%	353
	65+	39.4%	45.9%	14.7%	218
1977	18-34	29.8%	58.1%	12.2%	543
	35-49	36.1%	55.2%	8.7%	405
	50-64	41.5%	47.9%	10.7%	376
	65+	39.6%	46.8%	13.7%	199
1978	18-34	32.6%	59.5%	7.8%	608
	35-49	33.9%	57.5%	8.6%	372
	50-64	38.7%	53.8%	7.5%	323
	65+	40.7%	48.3%	11.0%	212
1980	18-34	30.1%	57.6%	12.3%	563
	35-49	35.0%	57.6%	7.4%	365
	50-64	36.9%	47.3%	15.8%	311
	65+	46.7%	40.3%	13.0%	216
1982	18-34	29.1%	59.9%	11.0%	605
	35-49	32.4%	53.6%	14.0%	336
	50-64	41.5%	48.5%	10.0%	327
	65+	43.5%	44.6%	11.9%	229

SURVEY YEAR	AGE	VERY HAPPY	PRETTY HAPPY	NOT TOO HAPPY	Total
1983	18-34	28.9%	59.3%	11.8%	608
	35-49	31.0%	56.5%	12.5%	402
	50-64	32.1%	53.2%	14.7%	337
	65+	39.3%	52.3%	8.4%	216
1984	18-34	30.3%	57.9%	11.8%	571
	35-49	35.4%	53.2%	11.5%	400
	50-64	41.6%	45.8%	12.5%	272
	65+	47.8%	42.9%	9.4%	199
1985	18-34	28.2%	63.8%	8.0%	548
	35-49	26.5%	62.9%	10.6%	391
	50-64	33.8%	52.1%	14.2%	351
	65+	31.9%	57.8%	10.3%	236
1986	18-34	27.6%	62.5%	10.0%	526
	35-49	33.8%	60.0%	6.1%	411
	50-64	35.0%	51.1%	13.9%	278
	65+	43.5%	44.0%	12.5%	229
1987	18-34	31.3%	55.1%	13.6%	509
	35-49	31.4%	60.8%	7.8%	433
	50-64	35.1%	51.9%	13.0%	272
	65+	41.0%	47.2%	11.8%	222
1988	18-34	32.5%	59.7%	7.8%	552
	35-49	37.8%	54.5%	7.7%	421
	50-64	37.9%	51.6%	10.5%	248
	65+	39.0%	53.0%	8.0%	245
1989	18-34	33.5%	57.9%	8.6%	552
	35-49	31.5%	60.6%	7.9%	444
	50-64	38.9%	50.1%	11.0%	282
	65+	37.2%	54.5%	8.3%	247
1990	18-34	36.3%	57.0%	6.6%	480
	35-49	34.1%	57.7%	8.3%	417
	50-64	37.8%	53.9%	8.3%	236
	65+	35.4%	56.1%	8.5%	226
1991	18-34	28.5%	63.0%	8.5%	517
	35-49	34.7%	53.5%	11.8%	477
	50-64	32.7%	60.8%	6.5%	268
	65+	36.8%	53.3%	9.9%	242

SURVEY YEAR	AGE	VERY HAPPY	PRETTY HAPPY	NOT TOO HAPPY	Total
1993	18-34	30.8%	61.5%	7.7%	518
	35-49	30.2%	59.1%	10.7%	538
	50-64	39.3%	50.1%	10.6%	290
	65+	38.4%	50.5%	11.1%	252
1994	18-34	26.8%	62.1%	11.1%	968
	35-49	30.2%	58.0%	11.8%	982
	50-64	33.0%	56.7%	10.4%	580
	65+	35.8%	52.3%	11.9%	444
1996	18-34	28.9%	61.1%	10.0%	989
	35-49	30.3%	58.5%	11.3%	974
	50-64	36.2%	52.9%	10.9%	550
	65+	39.6%	51.0%	9.4%	369
1998	18-34	30.7%	57.9%	11.4%	919
	35-49	30.8%	58.5%	10.7%	935
	50-64	38.5%	52.0%	9.4%	548
	65+	37.8%	50.3%	11.9%	403
2000	18-34	30.6%	60.6%	8.8%	875
	35-49	33.0%	56.9%	10.1%	942
	50-64	37.6%	53.5%	8.9%	561
	65+	38.2%	50.3%	11.5%	401
2002	18-34	31.9%	54.2%	14.0%	427
	35-49	31.8%	57.8%	10.4%	390
	50-64	34.3%	53.9%	11.7%	313
	65+	35.2%	57.4%	7.4%	226
2004	18-34	33.8%	53.4%	12.8%	417
	35-49	33.5%	57.4%	9.1%	415
	50-64	32.0%	55.4%	12.6%	314
	65+	36.7%	50.5%	12.9%	174
2006	18-34	29.0%	59.4%	11.6%	933
	35-49	32.7%	54.8%	12.5%	916
	50-64	31.4%	56.5%	12.1%	708
	65+	40.1%	50.3%	9.6%	428
2008	18-34	28.1%	56.3%	15.6%	571
	35-49	29.8%	59.1%	11.1%	603
	50-64	32.2%	52.3%	15.5%	519
	65+	40.4%	46.0%	13.7%	315



<b>SURVEY YEAR</b>	<b>AGE</b>	<b>VERY HAPPY</b>	<b>PRETTY HAPPY</b>	<b>NOT TOO HAPPY</b>	<b>Total</b>
2010	18-34	26.6%	61.6%	11.8%	609
	35-49	29.0%	56.2%	14.8%	546
	50-64	28.3%	54.6%	17.1%	536
	65+	32.8%	54.5%	12.8%	344
2012	18-34	33.8%	55.1%	11.2%	605
	35-49	32.4%	55.7%	11.9%	542
	50-64	32.5%	52.5%	15.0%	492
	65+	33.1%	53.1%	13.8%	321
2014	18-34	29.0%	61.4%	9.6%	712
	35-49	34.3%	53.5%	12.2%	641
	50-64	31.8%	53.9%	14.3%	732
	65+	36.8%	50.6%	12.6%	437
Total	18-34	30.2%	58.7%	11.1%	18503
	35-49	32.7%	56.4%	10.9%	15656
	50-64	35.3%	52.5%	12.3%	11802
	65+	38.5%	50.1%	11.4%	8068

**Table 12. HAPPINESS OF MARRIAGE**

SURVEY YEAR	AGE	VERY HAPPY	PRETTY HAPPY	NOT TOO HAPPY	Total
1973	18-34	69.2%	29.1%	1.7%	316
	35-49	62.5%	32.7%	4.8%	353
	50-64	67.9%	30.1%	2.0%	319
	65+	74.4%	23.3%	2.3%	120
1974	18-34	69.6%	25.7%	4.6%	323
	35-49	65.3%	30.1%	4.5%	339
	50-64	73.8%	22.8%	3.4%	284
	65+	65.2%	32.2%	2.7%	158
1975	18-34	66.7%	30.7%	2.7%	313
	35-49	68.9%	27.5%	3.6%	341
	50-64	63.3%	35.0%	1.7%	269
	65+	73.2%	23.1%	3.7%	137
1976	18-34	69.6%	28.1%	2.3%	335
	35-49	60.0%	36.6%	3.4%	296
	50-64	65.1%	33.6%	1.4%	282
	65+	73.8%	21.7%	4.5%	130
1977	18-34	64.3%	31.8%	3.9%	293
	35-49	59.7%	36.8%	3.5%	341
	50-64	70.8%	25.9%	3.3%	299
	65+	70.5%	25.2%	4.3%	116
1978	18-34	68.0%	30.9%	1.1%	369
	35-49	57.5%	37.3%	5.1%	316
	50-64	69.8%	28.3%	1.9%	260
	65+	69.5%	28.0%	2.5%	123
1980	18-34	66.4%	30.1%	3.5%	304
	35-49	62.5%	34.9%	2.7%	289
	50-64	69.5%	27.7%	2.9%	249
	65+	76.3%	22.2%	1.5%	136
1982	18-34	64.3%	34.1%	1.6%	313
	35-49	60.4%	33.9%	5.7%	254
	50-64	70.2%	27.6%	2.2%	262
	65+	74.7%	23.0%	2.3%	133
1983	18-34	60.7%	36.2%	3.1%	340
	35-49	61.0%	35.8%	3.2%	317
	50-64	66.2%	30.1%	3.7%	273
	65+	62.2%	35.5%	2.3%	133

SURVEY YEAR	AGE	VERY HAPPY	PRETTY HAPPY	NOT TOO HAPPY	Total
1984	18-34	66.7%	31.8%	1.5%	276
	35-49	66.9%	29.5%	3.6%	319
	50-64	65.0%	31.7%	3.2%	223
	65+	66.5%	31.2%	2.3%	113
1985	18-34	59.0%	38.4%	2.6%	282
	35-49	49.6%	46.0%	4.4%	294
	50-64	57.7%	38.9%	3.4%	276
	65+	59.8%	37.8%	2.4%	132
1986	18-34	58.3%	38.0%	3.7%	257
	35-49	60.4%	35.2%	4.5%	316
	50-64	66.7%	30.0%	3.4%	208
	65+	74.9%	24.0%	1.1%	132
1987	18-34	65.8%	31.6%	2.6%	229
	35-49	61.1%	36.4%	2.5%	329
	50-64	68.9%	29.0%	2.1%	218
	65+	70.0%	29.1%	.9%	111
1988	18-34	60.0%	36.6%	3.3%	238
	35-49	64.0%	31.9%	4.1%	308
	50-64	60.0%	36.6%	3.4%	189
	65+	63.5%	33.6%	2.9%	147
1989	18-34	58.7%	39.3%	2.0%	226
	35-49	60.4%	37.5%	2.1%	340
	50-64	60.0%	37.1%	2.9%	215
	65+	62.7%	35.0%	2.3%	159
1990	18-34	70.4%	28.2%	1.4%	221
	35-49	60.6%	36.1%	3.3%	302
	50-64	62.7%	35.5%	1.7%	184
	65+	67.0%	32.2%	.9%	124
1991	18-34	65.4%	32.2%	2.4%	226
	35-49	66.8%	29.0%	4.3%	360
	50-64	56.6%	40.4%	3.0%	197
	65+	61.8%	35.9%	2.3%	138
1993	18-34	65.0%	31.2%	3.8%	224
	35-49	56.4%	41.1%	2.5%	386
	50-64	62.9%	35.2%	1.9%	219
	65+	65.8%	31.7%	2.5%	147

SURVEY YEAR	AGE	VERY HAPPY	PRETTY HAPPY	NOT TOO HAPPY	Total
1994	18-34	63.2%	33.3%	3.6%	452
	35-49	59.0%	38.2%	2.7%	670
	50-64	56.7%	40.5%	2.8%	405
	65+	65.4%	33.7%	.8%	265
1996	18-34	68.2%	30.0%	1.8%	401
	35-49	54.8%	43.0%	2.2%	645
	50-64	63.4%	34.3%	2.4%	390
	65+	70.1%	28.5%	1.4%	196
1998	18-34	66.5%	32.3%	1.3%	348
	35-49	59.3%	37.5%	3.2%	623
	50-64	65.8%	30.8%	3.3%	378
	65+	67.6%	30.0%	2.4%	227
2000	18-34	61.3%	37.1%	1.6%	310
	35-49	61.0%	34.8%	4.2%	595
	50-64	63.4%	33.2%	3.4%	388
	65+	67.1%	30.4%	2.4%	202
2002	18-34	66.4%	31.2%	2.3%	143
	35-49	53.6%	43.6%	2.7%	245
	50-64	58.7%	37.6%	3.7%	209
	65+	69.2%	30.8%	0.0%	112
2004	18-34	68.2%	26.1%	5.7%	164
	35-49	55.9%	41.2%	3.0%	282
	50-64	62.8%	35.5%	1.7%	223
	65+	67.9%	29.5%	2.7%	107
2006	18-34	62.8%	35.8%	1.4%	338
	35-49	59.2%	37.5%	3.3%	598
	50-64	58.1%	39.9%	2.0%	464
	65+	65.6%	33.0%	1.4%	254
2008	18-34	65.0%	33.8%	1.3%	173
	35-49	60.2%	37.5%	2.3%	403
	50-64	61.4%	34.6%	4.1%	365
	65+	64.6%	33.3%	2.0%	196
2010	18-34	61.2%	36.5%	2.3%	194
	35-49	63.9%	33.4%	2.8%	335
	50-64	65.6%	31.7%	2.7%	331
	65+	58.9%	38.4%	2.7%	188

SURVEY YEAR	AGE	VERY HAPPY	PRETTY HAPPY	NOT TOO HAPPY	Total
2012	18-34	74.8%	24.0%	1.2%	183
	35-49	65.9%	31.1%	3.0%	361
	50-64	60.0%	36.5%	3.5%	294
	65+	63.4%	36.2%	.4%	189
2014	18-34	65.2%	31.3%	3.5%	229
	35-49	59.5%	37.2%	3.4%	393
	50-64	57.5%	38.3%	4.2%	468
	65+	60.4%	37.7%	1.9%	239
Total	18-34	65.2%	32.3%	2.5%	8019
	35-49	60.4%	36.2%	3.4%	10947
	50-64	63.6%	33.6%	2.9%	8341
	65+	66.8%	31.1%	2.1%	4561

**Table 13. SATISFACTION WITH FINANCIAL SITUATION**

SURVEY YEAR	AGE	SATISFIED	MORE OR LESS	NOT AT ALL SAT	Total
1972	18-34	27.8%	43.9%	28.3%	581
	35-49	30.9%	45.7%	23.4%	428
	50-64	38.5%	46.9%	14.6%	396
	65+	35.3%	45.7%	19.1%	201
1973	18-34	27.2%	45.8%	27.0%	530
	35-49	27.5%	46.2%	26.2%	413
	50-64	38.1%	46.0%	15.9%	368
	65+	41.1%	40.8%	18.1%	187
1974	18-34	23.0%	50.1%	27.0%	536
	35-49	29.2%	48.4%	22.4%	380
	50-64	38.8%	38.4%	22.8%	339
	65+	43.3%	41.8%	14.9%	219
1975	18-34	27.5%	42.6%	29.9%	557
	35-49	25.4%	43.4%	31.2%	389
	50-64	37.7%	44.7%	17.6%	321
	65+	42.8%	40.1%	17.1%	209
1976	18-34	24.7%	46.0%	29.4%	577
	35-49	27.8%	48.0%	24.3%	344
	50-64	35.0%	49.0%	16.1%	347
	65+	45.4%	37.4%	17.1%	218
1977	18-34	29.4%	47.6%	23.0%	542
	35-49	33.8%	42.8%	23.4%	403
	50-64	39.8%	43.8%	16.4%	373
	65+	41.5%	40.7%	17.8%	197
1978	18-34	27.8%	44.0%	28.3%	613
	35-49	31.3%	41.5%	27.2%	372
	50-64	41.4%	42.0%	16.6%	326
	65+	47.3%	36.1%	16.6%	213
1980	18-34	21.5%	45.5%	33.0%	562
	35-49	27.1%	45.3%	27.6%	365
	50-64	31.2%	47.4%	21.4%	308
	65+	42.7%	43.2%	14.1%	218
1982	18-34	20.4%	46.8%	32.8%	602
	35-49	26.3%	41.6%	32.1%	336
	50-64	27.8%	50.6%	21.5%	326
	65+	41.6%	47.5%	10.9%	227

SURVEY YEAR	AGE	SATISFIED	MORE OR LESS	NOT AT ALL SAT	Total
1983	18-34	19.4%	44.1%	36.5%	625
	35-49	31.1%	37.8%	31.1%	405
	50-64	32.6%	41.4%	26.0%	337
	65+	47.1%	40.2%	12.7%	219
1984	18-34	21.1%	50.5%	28.3%	569
	35-49	24.7%	47.8%	27.5%	408
	50-64	37.7%	42.0%	20.3%	279
	65+	42.6%	40.0%	17.4%	201
1985	18-34	23.6%	48.0%	28.4%	545
	35-49	26.2%	45.9%	27.8%	389
	50-64	36.0%	39.0%	25.0%	348
	65+	41.1%	44.4%	14.4%	237
1986	18-34	24.9%	44.8%	30.3%	536
	35-49	28.6%	43.2%	28.1%	413
	50-64	35.9%	39.4%	24.7%	279
	65+	46.0%	40.6%	13.4%	232
1987	18-34	22.4%	49.9%	27.7%	516
	35-49	26.1%	51.9%	22.0%	438
	50-64	33.6%	46.5%	19.8%	278
	65+	51.0%	41.4%	7.6%	226
1988	18-34	23.8%	46.9%	29.4%	550
	35-49	25.3%	48.2%	26.5%	423
	50-64	37.3%	44.1%	18.5%	249
	65+	48.6%	44.3%	7.1%	246
1989	18-34	25.4%	46.2%	28.5%	551
	35-49	28.5%	43.6%	27.9%	448
	50-64	36.5%	41.9%	21.7%	283
	65+	40.2%	46.4%	13.4%	248
1990	18-34	27.9%	41.5%	30.6%	480
	35-49	23.7%	43.9%	32.4%	419
	50-64	35.0%	40.7%	24.3%	240
	65+	43.0%	45.5%	11.5%	226
1991	18-34	22.3%	47.7%	29.9%	518
	35-49	23.3%	47.0%	29.7%	476
	50-64	32.5%	48.0%	19.5%	270
	65+	45.0%	43.3%	11.7%	241

SURVEY YEAR	AGE	SATISFIED	MORE OR LESS	NOT AT ALL SAT	Total
1993	18-34	21.2%	46.9%	31.9%	517
	35-49	23.1%	47.8%	29.0%	539
	50-64	29.3%	42.7%	28.0%	289
	65+	46.7%	41.2%	12.2%	248
1994	18-34	21.9%	49.0%	29.1%	967
	35-49	25.1%	46.9%	27.9%	984
	50-64	34.1%	42.7%	23.2%	579
	65+	44.3%	44.5%	11.2%	443
1996	18-34	21.8%	48.2%	29.9%	992
	35-49	24.8%	45.3%	29.9%	977
	50-64	31.6%	43.0%	25.4%	555
	65+	46.8%	35.8%	17.3%	370
1998	18-34	23.4%	45.5%	31.2%	925
	35-49	28.3%	44.2%	27.5%	942
	50-64	38.1%	41.5%	20.4%	552
	65+	42.3%	46.0%	11.8%	402
2000	18-34	24.0%	48.7%	27.3%	883
	35-49	27.1%	45.8%	27.1%	953
	50-64	37.8%	42.6%	19.6%	560
	65+	43.4%	41.1%	15.6%	403
2002	18-34	23.9%	44.4%	31.7%	427
	35-49	28.8%	44.3%	26.9%	390
	50-64	32.9%	38.4%	28.6%	313
	65+	43.1%	41.1%	15.8%	225
2004	18-34	31.0%	42.3%	26.7%	418
	35-49	28.1%	44.5%	27.4%	413
	50-64	35.8%	40.8%	23.5%	314
	65+	46.3%	38.4%	15.3%	174
2006	18-34	24.4%	47.6%	28.0%	931
	35-49	29.3%	45.6%	25.1%	915
	50-64	29.8%	45.8%	24.5%	706
	65+	44.4%	40.5%	15.1%	426
2008	18-34	24.0%	43.8%	32.2%	572
	35-49	24.0%	42.8%	33.2%	601
	50-64	28.3%	44.4%	27.3%	520
	65+	48.2%	31.7%	20.1%	316



<b>SURVEY YEAR</b>	<b>AGE</b>	<b>SATISFIED</b>	<b>MORE OR LESS</b>	<b>NOT AT ALL SAT</b>	<b>Total</b>
2010	18-34	20.8%	45.4%	33.8%	605
	35-49	20.0%	46.6%	33.4%	548
	50-64	19.1%	45.4%	35.4%	537
	65+	39.9%	41.9%	18.1%	345
2012	18-34	22.6%	49.2%	28.2%	608
	35-49	25.0%	46.3%	28.7%	544
	50-64	25.6%	41.8%	32.6%	491
	65+	40.6%	39.6%	19.7%	321
2014	18-34	23.8%	48.7%	27.5%	709
	35-49	20.5%	49.9%	29.6%	643
	50-64	25.3%	47.4%	27.3%	733
	65+	44.8%	37.3%	17.9%	437
Total	18-34	23.9%	46.6%	29.5%	18545
	35-49	26.5%	45.5%	28.0%	15700
	50-64	33.0%	43.8%	23.2%	11815
	65+	43.9%	41.2%	14.9%	8072

**Table 14. JOB OR HOUSEWORK**

SURVEY YEAR	AGE	VERY SATISFIED	MOD. SATISFIED	A LITTLE DISSAT	VERY DISSATISFIED	Total
1972	18-34	36.7%	38.5%	18.7%	6.0%	353
	35-49	50.7%	37.7%	9.5%	2.1%	295
	50-64	57.7%	34.3%	6.1%	1.9%	257
	65+	73.3%	20.8%	5.9%	0.0%	45
1973	18-34	40.5%	41.9%	10.2%	7.4%	413
	35-49	52.3%	38.3%	7.3%	2.1%	370
	50-64	57.6%	34.6%	4.9%	2.9%	298
	65+	47.0%	47.0%	3.0%	3.0%	61
1974	18-34	39.9%	39.8%	13.1%	7.2%	466
	35-49	49.6%	35.7%	10.2%	4.5%	370
	50-64	51.9%	40.3%	5.8%	2.0%	304
	65+	67.4%	28.9%	3.7%	0.0%	87
1975	18-34	43.3%	38.4%	12.3%	6.0%	444
	35-49	57.5%	31.8%	7.7%	3.0%	356
	50-64	60.8%	30.4%	7.0%	1.8%	281
	65+	68.9%	20.7%	6.7%	3.6%	90
1976	18-34	40.9%	39.3%	12.8%	7.1%	479
	35-49	54.4%	33.3%	9.9%	2.3%	317
	50-64	58.5%	33.9%	5.1%	2.5%	305
	65+	62.6%	27.5%	6.6%	3.3%	88
1977	18-34	35.6%	46.3%	14.2%	3.9%	480
	35-49	47.0%	38.9%	12.0%	2.1%	378
	50-64	60.8%	32.6%	4.6%	2.0%	322
	65+	58.0%	33.7%	5.9%	2.4%	83
1978	18-34	43.7%	39.2%	12.0%	5.1%	563
	35-49	53.6%	36.4%	5.3%	4.6%	360
	50-64	57.7%	30.4%	7.7%	4.3%	284
	65+	66.3%	28.6%	3.4%	1.7%	89
1980	18-34	37.2%	40.0%	15.8%	7.0%	510
	35-49	49.4%	37.6%	9.4%	3.6%	355
	50-64	54.6%	32.5%	9.5%	3.3%	275
	65+	64.3%	25.1%	10.1%	.4%	116
1982	18-34	35.8%	42.9%	14.1%	7.2%	547
	35-49	51.8%	36.4%	9.6%	2.3%	318
	50-64	56.4%	34.8%	5.4%	3.5%	279
	65+	63.8%	28.2%	2.8%	5.1%	91

SURVEY YEAR	AGE	VERY SATISFIED	MOD. SATISFIED	A LITTLE DISSAT	VERY DISSATISFIED	Total
1983	18-34	39.6%	43.7%	10.3%	6.3%	583
	35-49	52.2%	34.0%	9.8%	4.0%	388
	50-64	60.6%	30.5%	5.8%	3.1%	279
	65+	59.6%	36.1%	3.3%	1.1%	93
1984	18-34	38.7%	39.6%	14.8%	6.9%	509
	35-49	48.5%	32.9%	10.6%	8.1%	391
	50-64	56.4%	27.8%	10.8%	5.1%	235
	65+	59.1%	34.8%	3.7%	2.4%	85
1985	18-34	39.7%	42.3%	13.7%	4.3%	495
	35-49	51.6%	36.6%	7.7%	4.1%	378
	50-64	51.1%	36.2%	8.2%	4.5%	286
	65+	59.7%	33.7%	3.3%	3.3%	94
1986	18-34	41.2%	45.9%	9.6%	3.2%	480
	35-49	52.4%	35.2%	9.7%	2.7%	404
	50-64	57.4%	33.2%	7.4%	2.0%	225
	65+	59.0%	35.9%	3.2%	1.9%	79
1987	18-34	35.4%	41.0%	16.8%	6.7%	468
	35-49	44.4%	42.3%	9.7%	3.6%	423
	50-64	54.7%	32.6%	10.3%	2.5%	226
	65+	61.6%	24.0%	12.3%	2.1%	74
1988	18-34	37.0%	46.5%	13.3%	3.2%	480
	35-49	51.9%	33.8%	9.0%	5.2%	405
	50-64	50.3%	38.7%	7.3%	3.7%	203
	65+	61.0%	29.2%	6.5%	3.2%	82
1989	18-34	40.8%	42.5%	12.3%	4.5%	479
	35-49	47.3%	38.7%	10.5%	3.4%	432
	50-64	51.3%	34.6%	9.2%	4.9%	229
	65+	58.1%	37.2%	2.3%	2.3%	88
1990	18-34	39.1%	43.7%	12.8%	4.5%	416
	35-49	49.1%	37.9%	9.2%	3.7%	402
	50-64	51.2%	38.5%	7.6%	2.7%	196
	65+	59.5%	28.8%	10.8%	.9%	59
1991	18-34	37.8%	46.4%	11.7%	4.0%	448
	35-49	48.6%	39.5%	6.8%	5.1%	451
	50-64	49.9%	37.3%	10.1%	2.7%	215
	65+	49.2%	39.8%	10.2%	.8%	68

SURVEY YEAR	AGE	VERY SATISFIED	MOD. SATISFIED	A LITTLE DISSAT	VERY DISSATISFIED	Total
1993	18-34	35.2%	46.6%	11.1%	7.1%	447
	35-49	44.3%	39.3%	12.2%	4.1%	514
	50-64	51.4%	36.5%	8.6%	3.6%	235
	65+	64.1%	29.1%	5.1%	1.7%	62
1994	18-34	38.0%	45.0%	12.5%	4.5%	867
	35-49	46.5%	39.2%	11.4%	3.0%	938
	50-64	52.8%	38.4%	6.7%	2.1%	475
	65+	70.4%	23.8%	4.8%	1.1%	102
1996	18-34	38.5%	44.1%	12.5%	4.9%	884
	35-49	43.7%	42.4%	10.5%	3.3%	927
	50-64	54.1%	33.6%	7.8%	4.5%	460
	65+	70.8%	20.2%	6.2%	2.8%	97
1998	18-34	44.9%	41.0%	10.0%	4.1%	830
	35-49	46.0%	39.7%	11.7%	2.6%	896
	50-64	57.1%	33.4%	6.4%	3.1%	440
	65+	60.8%	34.2%	4.0%	1.0%	109
2000	18-34	41.7%	47.1%	8.3%	2.9%	775
	35-49	44.2%	42.5%	9.5%	3.8%	896
	50-64	50.9%	40.4%	6.2%	2.4%	440
	65+	61.4%	33.1%	4.2%	1.2%	91
2002	18-34	42.7%	41.2%	11.6%	4.5%	375
	35-49	52.2%	36.4%	8.1%	3.3%	373
	50-64	56.1%	33.3%	8.2%	2.4%	252
	65+	73.1%	21.3%	5.6%	0.0%	60
2004	18-34	47.0%	37.1%	9.8%	6.0%	444
	35-49	49.1%	37.8%	9.3%	3.8%	555
	50-64	55.5%	34.4%	6.3%	3.9%	339
	65+	68.2%	26.9%	2.4%	2.5%	76
2006	18-34	43.3%	40.4%	11.2%	5.1%	770
	35-49	50.7%	38.4%	6.2%	4.7%	841
	50-64	51.0%	38.5%	8.4%	2.1%	516
	65+	72.5%	23.4%	3.0%	1.2%	118
2008	18-34	43.8%	39.4%	13.4%	3.5%	503
	35-49	52.1%	36.8%	8.4%	2.6%	576
	50-64	55.0%	35.3%	6.3%	3.3%	426
	65+	74.3%	18.7%	3.5%	3.5%	87

SURVEY YEAR	AGE	VERY SATISFIED	MOD. SATISFIED	A LITTLE DISSAT	VERY DISSATISFIED	Total
2010	18-34	37.9%	44.9%	14.1%	3.1%	494
	35-49	50.5%	35.8%	9.5%	4.1%	499
	50-64	56.5%	30.2%	9.0%	4.3%	442
	65+	69.9%	24.5%	3.8%	1.8%	131
2012	18-34	46.1%	39.6%	8.7%	5.6%	514
	35-49	49.1%	39.6%	8.8%	2.5%	522
	50-64	57.2%	30.4%	10.2%	2.2%	392
	65+	54.1%	38.2%	6.7%	.9%	93
2014	18-34	38.5%	46.4%	9.9%	5.1%	597
	35-49	48.5%	36.8%	9.7%	5.0%	611
	50-64	55.2%	31.8%	8.1%	4.9%	618
	65+	71.8%	24.7%	2.0%	1.4%	111
Total	18-34	40.1%	42.5%	12.2%	5.1%	16114
	35-49	48.9%	38.0%	9.4%	3.7%	14942
	50-64	55.1%	34.3%	7.4%	3.2%	9731
	65+	64.0%	29.0%	5.0%	1.9%	2610

**Table 15. IS LIFE EXCITING OR DULL**

SURVEY YEAR	AGE	EXCITING	ROUTINE	DULL	Total
1973	18-34	54.1%	41.5%	4.3%	526
	35-49	46.2%	49.1%	4.8%	410
	50-64	40.8%	55.4%	3.8%	364
	65+	34.4%	57.3%	8.3%	182
1974	18-34	48.8%	47.7%	3.5%	526
	35-49	42.4%	53.8%	3.8%	366
	50-64	39.0%	56.5%	4.5%	333
	65+	40.2%	51.7%	8.0%	214
1976	18-34	53.4%	44.2%	2.5%	569
	35-49	41.5%	55.5%	3.0%	338
	50-64	37.1%	60.1%	2.8%	349
	65+	42.2%	51.2%	6.6%	214
1977	18-34	49.3%	44.9%	5.8%	532
	35-49	48.4%	47.8%	3.9%	397
	50-64	39.8%	52.1%	8.1%	370
	65+	30.9%	59.0%	10.1%	195
1980	18-34	48.5%	47.1%	4.4%	562
	35-49	47.1%	49.1%	3.8%	365
	50-64	47.1%	47.5%	5.4%	311
	65+	40.4%	50.6%	9.0%	216
1982	18-34	48.5%	48.3%	3.2%	601
	35-49	47.3%	47.8%	4.9%	336
	50-64	40.6%	54.0%	5.4%	326
	65+	41.8%	49.3%	8.9%	226
1984	18-34	49.4%	47.8%	2.8%	571
	35-49	50.5%	46.7%	2.8%	409
	50-64	45.5%	49.3%	5.2%	277
	65+	37.6%	52.1%	10.3%	200
1985	18-34	54.0%	43.0%	3.0%	544
	35-49	47.5%	48.5%	4.0%	388
	50-64	44.1%	46.7%	9.2%	350
	65+	38.5%	50.6%	10.9%	233
1987	18-34	49.0%	47.8%	3.2%	507
	35-49	46.2%	51.8%	2.0%	429
	50-64	39.7%	54.9%	5.4%	270
	65+	44.8%	50.3%	4.8%	220

SURVEY YEAR	AGE	EXCITING	ROUTINE	DULL	Total
1988	18-34	50.2%	44.9%	5.0%	353
	35-49	52.1%	46.0%	1.9%	277
	50-64	40.1%	54.2%	5.6%	169
	65+	35.0%	58.7%	6.3%	152
1989	18-34	50.2%	46.0%	3.8%	352
	35-49	48.5%	47.7%	3.8%	308
	50-64	41.4%	52.2%	6.4%	184
	65+	32.1%	60.6%	7.3%	175
1990	18-34	46.9%	50.6%	2.5%	315
	35-49	48.8%	48.8%	2.4%	271
	50-64	42.5%	54.8%	2.7%	155
	65+	37.8%	50.8%	11.4%	159
1991	18-34	46.3%	51.2%	2.4%	347
	35-49	47.4%	51.3%	1.2%	301
	50-64	45.2%	50.8%	4.0%	170
	65+	36.8%	56.0%	7.2%	163
1993	18-34	48.8%	46.3%	4.9%	342
	35-49	49.4%	47.4%	3.2%	359
	50-64	50.5%	42.1%	7.3%	195
	65+	35.0%	56.0%	9.0%	159
1994	18-34	51.3%	45.6%	3.1%	670
	35-49	48.4%	48.8%	2.8%	679
	50-64	47.2%	49.8%	3.0%	379
	65+	41.7%	51.7%	6.6%	278
1996	18-34	51.4%	44.8%	3.7%	670
	35-49	51.7%	44.9%	3.4%	637
	50-64	50.7%	45.3%	4.0%	356
	65+	47.7%	47.7%	4.7%	234
1998	18-34	46.0%	48.9%	5.1%	605
	35-49	47.6%	48.2%	4.2%	625
	50-64	45.8%	51.0%	3.2%	373
	65+	36.9%	54.6%	8.5%	265
2000	18-34	47.6%	48.6%	3.7%	588
	35-49	46.3%	49.8%	3.9%	608
	50-64	51.4%	44.5%	4.0%	367
	65+	38.6%	54.8%	6.6%	274

SURVEY YEAR	AGE	EXCITING	ROUTINE	DULL	Total
2002	18-34	53.0%	41.3%	5.7%	283
	35-49	51.8%	44.9%	3.3%	257
	50-64	51.3%	46.6%	2.1%	212
	65+	53.0%	45.2%	1.8%	157
2004	18-34	48.2%	49.0%	2.8%	272
	35-49	47.5%	50.8%	1.7%	274
	50-64	57.9%	37.5%	4.6%	216
	65+	41.5%	51.6%	7.0%	107
2006	18-34	54.2%	42.1%	3.7%	614
	35-49	52.6%	43.3%	4.1%	591
	50-64	48.7%	44.9%	6.4%	467
	65+	45.7%	47.4%	6.8%	293
2008	18-34	48.5%	47.4%	4.0%	378
	35-49	45.8%	51.1%	3.1%	395
	50-64	48.3%	47.1%	4.6%	348
	65+	48.2%	48.0%	3.8%	218
2010	18-34	55.8%	40.3%	3.9%	362
	35-49	51.8%	43.3%	4.9%	352
	50-64	54.0%	40.7%	5.3%	347
	65+	42.4%	53.3%	4.3%	201
2012	18-34	54.1%	40.4%	5.5%	377
	35-49	54.6%	41.9%	3.5%	377
	50-64	53.1%	40.5%	6.4%	334
	65+	45.1%	52.0%	2.9%	200
2014	18-34	51.0%	44.5%	4.5%	473
	35-49	52.2%	45.4%	2.4%	447
	50-64	49.9%	45.7%	4.4%	486
	65+	53.7%	40.3%	6.0%	297
Total	18-34	50.4%	45.8%	3.8%	11941
	35-49	48.6%	48.0%	3.4%	10198
	50-64	46.2%	48.8%	5.0%	7709
	65+	41.3%	51.6%	7.1%	5231



**Table 16. GENERAL HAPPINESS**

SURVEY YEAR	EDUCATION	VERY HAPPY	PRETTY HAPPY	NOT TOO HAPPY	Total
1972	LT HIGH SCHOOL	28.4%	51.7%	19.8%	623
	HIGH SCHOOL	29.4%	55.2%	15.4%	775
	COLLEGE+	35.7%	50.1%	14.2%	182
1973	LT HIGH SCHOOL	34.9%	47.7%	17.5%	547
	HIGH SCHOOL	40.2%	50.5%	9.3%	729
	COLLEGE+	31.4%	59.0%	9.6%	210
1974	LT HIGH SCHOOL	34.8%	49.1%	16.1%	512
	HIGH SCHOOL	40.1%	48.8%	11.1%	731
	COLLEGE+	40.0%	50.9%	9.1%	235
1975	LT HIGH SCHOOL	30.5%	52.6%	16.9%	526
	HIGH SCHOOL	33.9%	54.1%	12.0%	744
	COLLEGE+	39.0%	54.2%	6.8%	214
1976	LT HIGH SCHOOL	31.3%	53.5%	15.2%	519
	HIGH SCHOOL	36.4%	51.2%	12.4%	751
	COLLEGE+	38.2%	56.6%	5.2%	225
1977	LT HIGH SCHOOL	31.1%	50.7%	18.2%	530
	HIGH SCHOOL	36.6%	55.4%	7.9%	753
	COLLEGE+	43.5%	51.3%	5.2%	240
1978	LT HIGH SCHOOL	36.5%	52.9%	10.6%	459
	HIGH SCHOOL	35.0%	57.3%	7.8%	813
	COLLEGE+	35.2%	58.9%	5.9%	248
1980	LT HIGH SCHOOL	33.9%	46.5%	19.6%	432
	HIGH SCHOOL	33.3%	57.2%	9.4%	764
	COLLEGE+	43.3%	49.2%	7.4%	262
1982	LT HIGH SCHOOL	34.1%	48.6%	17.4%	428
	HIGH SCHOOL	32.1%	57.1%	10.8%	805
	COLLEGE+	43.1%	51.5%	5.4%	267
1983	LT HIGH SCHOOL	28.3%	50.6%	21.1%	412
	HIGH SCHOOL	30.0%	59.6%	10.4%	833
	COLLEGE+	40.5%	54.5%	5.0%	324
1984	LT HIGH SCHOOL	35.3%	47.8%	16.9%	385
	HIGH SCHOOL	34.5%	54.4%	11.1%	776
	COLLEGE+	42.3%	52.1%	5.6%	284
1985	LT HIGH SCHOOL	29.4%	54.1%	16.5%	404
	HIGH SCHOOL	28.1%	62.9%	9.0%	809
	COLLEGE+	33.9%	59.6%	6.5%	318

SURVEY YEAR	EDUCATION	VERY HAPPY	PRETTY HAPPY	NOT TOO HAPPY	Total
1986	LT HIGH SCHOOL	32.2%	54.3%	13.4%	378
	HIGH SCHOOL	32.9%	57.3%	9.8%	771
	COLLEGE+	35.3%	57.8%	6.9%	301
1987	LT HIGH SCHOOL	31.2%	52.2%	16.5%	330
	HIGH SCHOOL	33.7%	54.9%	11.4%	771
	COLLEGE+	34.9%	58.7%	6.4%	331
1988	LT HIGH SCHOOL	33.1%	54.1%	12.7%	354
	HIGH SCHOOL	36.2%	56.5%	7.3%	798
	COLLEGE+	39.0%	55.4%	5.7%	318
1989	LT HIGH SCHOOL	30.1%	51.1%	18.8%	329
	HIGH SCHOOL	36.1%	57.9%	6.0%	828
	COLLEGE+	34.7%	59.0%	6.3%	366
1990	LT HIGH SCHOOL	34.0%	54.0%	12.0%	279
	HIGH SCHOOL	33.7%	59.3%	7.1%	739
	COLLEGE+	42.1%	52.1%	5.9%	335
1991	LT HIGH SCHOOL	24.8%	62.8%	12.5%	289
	HIGH SCHOOL	33.3%	56.8%	9.9%	835
	COLLEGE+	37.7%	56.5%	5.8%	372
1993	LT HIGH SCHOOL	31.1%	55.3%	13.5%	273
	HIGH SCHOOL	31.4%	59.0%	9.6%	858
	COLLEGE+	38.1%	54.2%	7.7%	467
1994	LT HIGH SCHOOL	26.2%	56.1%	17.6%	489
	HIGH SCHOOL	28.5%	60.3%	11.2%	1615
	COLLEGE+	36.6%	55.6%	7.9%	868
1996	LT HIGH SCHOOL	29.6%	54.6%	15.8%	424
	HIGH SCHOOL	29.7%	60.1%	10.2%	1589
	COLLEGE+	37.6%	53.8%	8.6%	869
1998	LT HIGH SCHOOL	30.3%	47.5%	22.2%	416
	HIGH SCHOOL	30.1%	59.1%	10.8%	1503
	COLLEGE+	40.0%	54.3%	5.7%	878
2000	LT HIGH SCHOOL	27.6%	54.1%	18.3%	430
	HIGH SCHOOL	31.8%	59.2%	9.0%	1499
	COLLEGE+	41.1%	52.5%	6.4%	837
2002	LT HIGH SCHOOL	31.3%	51.7%	17.0%	200
	HIGH SCHOOL	29.7%	58.6%	11.7%	739
	COLLEGE+	39.2%	53.0%	7.9%	424
2004	LT HIGH SCHOOL	23.1%	56.2%	20.7%	160
	HIGH SCHOOL	32.3%	55.6%	12.0%	707
	COLLEGE+	39.1%	52.9%	8.0%	458

SURVEY YEAR	EDUCATION	VERY HAPPY	PRETTY HAPPY	NOT TOO HAPPY	Total
2006	LT HIGH SCHOOL	23.7%	59.0%	17.3%	433
	HIGH SCHOOL	30.1%	57.2%	12.7%	1501
	COLLEGE+	39.2%	52.8%	8.0%	1057
2008	LT HIGH SCHOOL	25.3%	49.2%	25.4%	293
	HIGH SCHOOL	30.3%	55.6%	14.0%	1020
	COLLEGE+	36.3%	54.7%	9.0%	702
2010	LT HIGH SCHOOL	25.5%	50.8%	23.7%	306
	HIGH SCHOOL	27.0%	58.6%	14.5%	1024
	COLLEGE+	32.8%	57.5%	9.7%	707
2012	LT HIGH SCHOOL	30.1%	45.9%	24.0%	299
	HIGH SCHOOL	31.0%	56.6%	12.4%	964
	COLLEGE+	36.8%	54.3%	8.9%	703
2014	LT HIGH SCHOOL	27.5%	48.6%	23.9%	321
	HIGH SCHOOL	29.4%	57.9%	12.7%	1299
	COLLEGE+	38.6%	54.1%	7.2%	910
Total	LT HIGH SCHOOL	30.5%	51.9%	17.6%	11780
	HIGH SCHOOL	32.0%	57.2%	10.7%	28340
	COLLEGE+	38.1%	54.5%	7.4%	13910

**Table 17. HAPPINESS OF MARRIAGE**

SURVEY YEAR	EDUCATION	VERY HAPPY	PRETTY HAPPY	NOT TOO HAPPY	Total
1973	LT HIGH SCHOOL	62.6%	33.1%	4.3%	393
	HIGH SCHOOL	70.7%	27.0%	2.4%	545
	COLLEGE+	66.4%	32.5%	1.1%	163
1974	LT HIGH SCHOOL	65.0%	29.6%	5.4%	391
	HIGH SCHOOL	69.1%	27.5%	3.5%	538
	COLLEGE+	76.9%	20.5%	2.6%	178
1975	LT HIGH SCHOOL	61.5%	34.7%	3.8%	367
	HIGH SCHOOL	69.4%	27.6%	3.0%	541
	COLLEGE+	74.5%	25.5%	0.0%	154
1976	LT HIGH SCHOOL	59.5%	36.9%	3.6%	354
	HIGH SCHOOL	69.9%	27.7%	2.4%	525
	COLLEGE+	68.8%	29.7%	1.5%	162
1977	LT HIGH SCHOOL	59.7%	34.2%	6.2%	360
	HIGH SCHOOL	66.9%	30.7%	2.4%	514
	COLLEGE+	72.6%	25.4%	2.0%	175
1978	LT HIGH SCHOOL	62.4%	33.8%	3.8%	320
	HIGH SCHOOL	67.0%	30.6%	2.3%	582
	COLLEGE+	66.2%	32.3%	1.5%	169
1980	LT HIGH SCHOOL	67.8%	26.9%	5.3%	287
	HIGH SCHOOL	66.6%	31.7%	1.7%	509
	COLLEGE+	70.3%	27.8%	2.0%	180
1982	LT HIGH SCHOOL	65.0%	32.0%	3.1%	253
	HIGH SCHOOL	67.1%	29.6%	3.4%	534
	COLLEGE+	65.6%	32.4%	2.1%	175
1983	LT HIGH SCHOOL	58.7%	38.3%	3.0%	252
	HIGH SCHOOL	61.7%	35.0%	3.3%	584
	COLLEGE+	68.5%	28.4%	3.1%	230
1984	LT HIGH SCHOOL	60.7%	33.5%	5.8%	231
	HIGH SCHOOL	67.0%	31.2%	1.7%	505
	COLLEGE+	71.4%	26.5%	2.1%	195
1985	LT HIGH SCHOOL	50.1%	44.4%	5.5%	253
	HIGH SCHOOL	55.8%	41.8%	2.4%	520
	COLLEGE+	63.5%	33.6%	2.9%	211
1986	LT HIGH SCHOOL	62.2%	35.2%	2.6%	212
	HIGH SCHOOL	63.4%	33.0%	3.6%	498
	COLLEGE+	63.9%	32.0%	4.1%	208

SURVEY YEAR	EDUCATION	VERY HAPPY	PRETTY HAPPY	NOT TOO HAPPY	Total
1987	LT HIGH SCHOOL	67.1%	28.9%	3.9%	180
	HIGH SCHOOL	64.8%	33.1%	2.1%	477
	COLLEGE+	65.3%	34.3%	.4%	227
1988	LT HIGH SCHOOL	58.8%	36.6%	4.5%	187
	HIGH SCHOOL	63.1%	33.5%	3.3%	493
	COLLEGE+	62.2%	34.7%	3.1%	205
1989	LT HIGH SCHOOL	58.6%	35.9%	5.5%	178
	HIGH SCHOOL	61.2%	37.1%	1.7%	514
	COLLEGE+	59.8%	39.0%	1.3%	245
1990	LT HIGH SCHOOL	58.0%	41.4%	.7%	163
	HIGH SCHOOL	64.5%	33.3%	2.2%	431
	COLLEGE+	69.3%	27.8%	3.0%	232
1991	LT HIGH SCHOOL	49.5%	46.3%	4.1%	167
	HIGH SCHOOL	63.9%	33.6%	2.5%	503
	COLLEGE+	72.7%	23.2%	4.1%	247
1993	LT HIGH SCHOOL	53.3%	41.9%	4.8%	144
	HIGH SCHOOL	60.6%	37.5%	1.9%	508
	COLLEGE+	66.2%	30.9%	2.9%	323
1994	LT HIGH SCHOOL	62.3%	36.0%	1.7%	251
	HIGH SCHOOL	56.8%	40.1%	3.2%	955
	COLLEGE+	65.6%	31.9%	2.5%	585
1996	LT HIGH SCHOOL	61.1%	36.7%	2.1%	203
	HIGH SCHOOL	61.0%	37.1%	1.9%	885
	COLLEGE+	63.8%	34.0%	2.2%	543
1998	LT HIGH SCHOOL	61.1%	32.6%	6.3%	209
	HIGH SCHOOL	60.5%	37.6%	1.9%	812
	COLLEGE+	69.0%	28.5%	2.5%	551
2000	LT HIGH SCHOOL	56.5%	37.8%	5.7%	185
	HIGH SCHOOL	60.1%	36.9%	3.0%	809
	COLLEGE+	68.2%	29.0%	2.7%	501
2002	LT HIGH SCHOOL	61.4%	35.9%	2.8%	81
	HIGH SCHOOL	56.7%	40.9%	2.5%	363
	COLLEGE+	64.5%	32.6%	2.9%	269
2004	LT HIGH SCHOOL	55.9%	39.9%	4.2%	80
	HIGH SCHOOL	58.4%	38.0%	3.6%	389
	COLLEGE+	67.6%	30.1%	2.2%	309
2006	LT HIGH SCHOOL	51.8%	44.3%	3.8%	205
	HIGH SCHOOL	59.9%	37.7%	2.4%	786
	COLLEGE+	64.3%	34.0%	1.7%	665

SURVEY YEAR	EDUCATION	VERY HAPPY	PRETTY HAPPY	NOT TOO HAPPY	Total
2008	LT HIGH SCHOOL	44.1%	48.4%	7.5%	129
	HIGH SCHOOL	59.3%	38.5%	2.2%	544
	COLLEGE+	70.3%	27.9%	1.8%	464
2010	LT HIGH SCHOOL	52.4%	44.7%	2.9%	121
	HIGH SCHOOL	63.6%	33.4%	3.0%	500
	COLLEGE+	65.4%	32.5%	2.1%	427
2012	LT HIGH SCHOOL	59.7%	37.0%	3.3%	136
	HIGH SCHOOL	67.2%	30.7%	2.1%	451
	COLLEGE+	65.4%	32.3%	2.3%	443
2014	LT HIGH SCHOOL	52.7%	40.8%	6.6%	145
	HIGH SCHOOL	56.7%	39.2%	4.0%	600
	COLLEGE+	64.9%	32.8%	2.2%	591
Total	LT HIGH SCHOOL	59.6%	36.1%	4.3%	6437
	HIGH SCHOOL	62.9%	34.5%	2.6%	16416
	COLLEGE+	66.8%	30.9%	2.3%	9027

**Table 18. SATISFACTION WITH FINANCIAL SITUATION**

SURVEY YEAR	EDUCATION	SATISFIED	MORE OR LESS	NOT AT ALL SAT	Total
1972	LT HIGH SCHOOL	31.0%	46.3%	22.7%	623
	HIGH SCHOOL	30.7%	45.3%	24.1%	778
	COLLEGE+	43.6%	40.9%	15.6%	183
1973	LT HIGH SCHOOL	30.3%	42.4%	27.3%	546
	HIGH SCHOOL	32.3%	47.1%	20.6%	729
	COLLEGE+	34.8%	46.7%	18.5%	210
1974	LT HIGH SCHOOL	32.2%	42.2%	25.7%	514
	HIGH SCHOOL	28.0%	48.8%	23.1%	729
	COLLEGE+	38.4%	44.9%	16.7%	234
1975	LT HIGH SCHOOL	28.0%	41.1%	30.9%	526
	HIGH SCHOOL	32.1%	43.5%	24.4%	738
	COLLEGE+	37.0%	44.8%	18.2%	215
1976	LT HIGH SCHOOL	27.6%	46.8%	25.7%	518
	HIGH SCHOOL	32.2%	44.0%	23.8%	746
	COLLEGE+	34.6%	48.4%	17.1%	225
1977	LT HIGH SCHOOL	30.4%	43.6%	26.1%	525
	HIGH SCHOOL	33.6%	46.8%	19.7%	749
	COLLEGE+	49.2%	37.9%	12.9%	241
1978	LT HIGH SCHOOL	36.4%	38.2%	25.4%	461
	HIGH SCHOOL	32.3%	43.1%	24.5%	819
	COLLEGE+	37.3%	43.9%	18.9%	247
1980	LT HIGH SCHOOL	28.8%	43.2%	28.0%	431
	HIGH SCHOOL	26.7%	46.7%	26.6%	763
	COLLEGE+	32.0%	45.2%	22.7%	263
1982	LT HIGH SCHOOL	27.9%	46.0%	26.1%	425
	HIGH SCHOOL	23.6%	46.5%	29.9%	804
	COLLEGE+	32.6%	48.6%	18.7%	264
1983	LT HIGH SCHOOL	28.2%	36.8%	35.0%	412
	HIGH SCHOOL	25.9%	42.0%	32.1%	852
	COLLEGE+	37.7%	45.9%	16.4%	326
1984	LT HIGH SCHOOL	26.0%	43.7%	30.3%	387
	HIGH SCHOOL	26.6%	48.8%	24.6%	783
	COLLEGE+	36.3%	44.7%	19.0%	289
1985	LT HIGH SCHOOL	32.9%	40.5%	26.6%	400
	HIGH SCHOOL	26.0%	47.1%	26.9%	807
	COLLEGE+	36.1%	44.0%	19.9%	317
1986	LT HIGH SCHOOL	32.0%	39.6%	28.4%	381
	HIGH SCHOOL	28.5%	42.4%	29.1%	777
	COLLEGE+	38.2%	47.2%	14.5%	308

SURVEY YEAR	EDUCATION	SATISFIED	MORE OR LESS	NOT AT ALL SAT	Total
1987	LT HIGH SCHOOL	30.4%	43.7%	25.9%	337
	HIGH SCHOOL	27.8%	50.2%	22.1%	784
	COLLEGE+	35.0%	49.5%	15.5%	335
1988	LT HIGH SCHOOL	30.9%	43.7%	25.4%	356
	HIGH SCHOOL	27.4%	48.1%	24.5%	796
	COLLEGE+	38.9%	44.7%	16.4%	320
1989	LT HIGH SCHOOL	21.7%	47.7%	30.6%	327
	HIGH SCHOOL	32.3%	42.6%	25.1%	831
	COLLEGE+	35.6%	46.5%	17.9%	368
1990	LT HIGH SCHOOL	25.0%	41.0%	34.0%	281
	HIGH SCHOOL	29.9%	42.0%	28.1%	736
	COLLEGE+	36.2%	45.0%	18.8%	342
1991	LT HIGH SCHOOL	29.6%	45.6%	24.9%	293
	HIGH SCHOOL	24.1%	48.8%	27.1%	834
	COLLEGE+	35.8%	44.0%	20.2%	373
1993	LT HIGH SCHOOL	20.5%	44.2%	35.3%	271
	HIGH SCHOOL	25.2%	46.6%	28.2%	857
	COLLEGE+	35.3%	44.4%	20.3%	466
1994	LT HIGH SCHOOL	27.4%	43.4%	29.1%	487
	HIGH SCHOOL	25.8%	46.5%	27.6%	1613
	COLLEGE+	34.4%	48.0%	17.6%	869
1996	LT HIGH SCHOOL	26.7%	39.2%	34.1%	425
	HIGH SCHOOL	25.5%	46.1%	28.4%	1598
	COLLEGE+	32.8%	44.6%	22.6%	869
1998	LT HIGH SCHOOL	26.9%	43.8%	29.4%	416
	HIGH SCHOOL	25.9%	46.1%	28.0%	1510
	COLLEGE+	40.2%	41.7%	18.1%	887
2000	LT HIGH SCHOOL	26.3%	43.5%	30.3%	437
	HIGH SCHOOL	27.8%	47.3%	25.0%	1506
	COLLEGE+	38.3%	42.5%	19.2%	842
2002	LT HIGH SCHOOL	28.1%	39.3%	32.6%	199
	HIGH SCHOOL	26.8%	42.8%	30.5%	740
	COLLEGE+	38.7%	42.5%	18.8%	424
2004	LT HIGH SCHOOL	29.5%	41.5%	29.0%	161
	HIGH SCHOOL	28.4%	42.7%	28.8%	705
	COLLEGE+	41.7%	41.8%	16.5%	456
2006	LT HIGH SCHOOL	19.6%	49.7%	30.7%	434
	HIGH SCHOOL	28.4%	43.3%	28.3%	1496
	COLLEGE+	36.8%	46.8%	16.4%	1054



SURVEY YEAR	EDUCATION	SATISFIED	MORE OR LESS	NOT AT ALL SAT	Total
2008	LT HIGH SCHOOL	20.2%	39.9%	39.8%	293
	HIGH SCHOOL	24.8%	42.2%	32.9%	1020
	COLLEGE+	38.5%	41.5%	20.0%	702
2010	LT HIGH SCHOOL	16.8%	44.8%	38.4%	308
	HIGH SCHOOL	19.6%	44.2%	36.2%	1023
	COLLEGE+	31.6%	46.7%	21.7%	707
2012	LT HIGH SCHOOL	19.3%	42.5%	38.1%	302
	HIGH SCHOOL	22.5%	46.6%	30.9%	960
	COLLEGE+	36.3%	43.9%	19.8%	707
2014	LT HIGH SCHOOL	19.3%	48.3%	32.3%	320
	HIGH SCHOOL	22.8%	47.6%	29.7%	1299
	COLLEGE+	35.7%	44.6%	19.7%	911
Total	LT HIGH SCHOOL	27.5%	43.2%	29.3%	11797
	HIGH SCHOOL	27.1%	45.6%	27.3%	28380
	COLLEGE+	36.7%	44.7%	18.7%	13954

**Table 19. JOB OR HOUSEWORK**

SURVEY YEAR	EDUCATION	VERY SATISFIED	MOD. SATISFIED	A LITTLE DISSAT	VERY DISSATISFIED	Total
1972	LT HIGH SCHOOL	49.4%	36.7%	11.3%	2.7%	312
	HIGH SCHOOL	44.8%	38.6%	12.5%	4.2%	482
	COLLEGE+	58.4%	30.8%	8.4%	2.3%	137
1973	LT HIGH SCHOOL	44.4%	43.5%	7.6%	4.5%	385
	HIGH SCHOOL	51.1%	35.4%	9.1%	4.4%	571
	COLLEGE+	54.9%	38.9%	2.6%	3.6%	176
1974	LT HIGH SCHOOL	40.5%	42.7%	11.2%	5.6%	383
	HIGH SCHOOL	49.4%	37.5%	9.8%	3.3%	639
	COLLEGE+	54.8%	31.6%	6.9%	6.7%	208
1975	LT HIGH SCHOOL	49.1%	36.2%	9.8%	4.9%	377
	HIGH SCHOOL	56.4%	31.9%	8.3%	3.3%	616
	COLLEGE+	54.5%	30.9%	10.9%	3.6%	179
1976	LT HIGH SCHOOL	48.9%	35.4%	10.9%	4.8%	377
	HIGH SCHOOL	50.2%	35.7%	9.2%	4.9%	617
	COLLEGE+	55.8%	34.1%	8.1%	2.0%	197
1977	LT HIGH SCHOOL	43.3%	42.7%	11.2%	2.8%	388
	HIGH SCHOOL	46.8%	39.3%	11.2%	2.6%	672
	COLLEGE+	55.6%	34.3%	7.0%	3.1%	205
1978	LT HIGH SCHOOL	52.8%	33.8%	8.1%	5.4%	349
	HIGH SCHOOL	49.0%	37.1%	9.4%	4.5%	729
	COLLEGE+	55.4%	34.5%	6.7%	3.4%	220
1980	LT HIGH SCHOOL	50.8%	34.0%	10.6%	4.6%	334
	HIGH SCHOOL	45.7%	35.5%	13.9%	5.0%	689
	COLLEGE+	46.1%	41.2%	9.1%	3.7%	237
1982	LT HIGH SCHOOL	50.0%	34.3%	9.0%	6.8%	305
	HIGH SCHOOL	44.2%	39.8%	11.5%	4.5%	699
	COLLEGE+	49.7%	38.6%	7.5%	4.2%	234
1983	LT HIGH SCHOOL	50.9%	36.0%	8.4%	4.6%	306
	HIGH SCHOOL	46.4%	38.5%	9.5%	5.6%	746
	COLLEGE+	53.5%	37.2%	7.1%	2.2%	294
1984	LT HIGH SCHOOL	47.5%	32.4%	9.8%	10.2%	284
	HIGH SCHOOL	44.5%	36.9%	13.3%	5.4%	675
	COLLEGE+	51.5%	32.1%	10.5%	5.9%	261
1985	LT HIGH SCHOOL	48.7%	36.7%	10.1%	4.4%	281
	HIGH SCHOOL	44.9%	39.2%	10.9%	5.0%	688
	COLLEGE+	52.1%	39.0%	6.9%	2.0%	284

SURVEY YEAR	EDUCATION	VERY SATISFIED	MOD. SATISFIED	A LITTLE DISSAT	VERY DISSATISFIED	Total
1986	LT HIGH SCHOOL	52.4%	35.7%	7.9%	4.0%	254
	HIGH SCHOOL	46.7%	41.2%	9.2%	2.8%	661
	COLLEGE+	52.1%	37.6%	8.9%	1.5%	277
1987	LT HIGH SCHOOL	43.1%	38.2%	15.4%	3.3%	226
	HIGH SCHOOL	43.0%	37.8%	13.7%	5.6%	662
	COLLEGE+	46.8%	41.3%	8.9%	3.0%	302
1988	LT HIGH SCHOOL	44.7%	40.0%	10.4%	4.9%	240
	HIGH SCHOOL	45.2%	39.2%	10.9%	4.7%	652
	COLLEGE+	49.3%	40.3%	8.9%	1.5%	281
1989	LT HIGH SCHOOL	40.1%	39.4%	12.6%	7.8%	215
	HIGH SCHOOL	46.4%	40.0%	9.9%	3.7%	670
	COLLEGE+	50.4%	37.6%	9.6%	2.4%	340
1990	LT HIGH SCHOOL	39.6%	38.5%	16.0%	5.9%	180
	HIGH SCHOOL	43.2%	43.1%	9.9%	3.7%	600
	COLLEGE+	56.4%	33.4%	8.0%	2.2%	291
1991	LT HIGH SCHOOL	39.0%	44.8%	13.0%	3.2%	184
	HIGH SCHOOL	43.9%	41.9%	9.8%	4.5%	666
	COLLEGE+	49.9%	39.5%	7.0%	3.6%	328
1993	LT HIGH SCHOOL	38.4%	40.1%	15.6%	5.9%	153
	HIGH SCHOOL	41.7%	42.1%	10.9%	5.2%	695
	COLLEGE+	48.3%	38.7%	8.9%	4.1%	410
1994	LT HIGH SCHOOL	44.6%	37.9%	11.7%	5.8%	291
	HIGH SCHOOL	41.2%	43.7%	11.6%	3.5%	1315
	COLLEGE+	53.4%	35.9%	8.6%	2.1%	774
1996	LT HIGH SCHOOL	44.2%	41.2%	9.0%	5.6%	271
	HIGH SCHOOL	43.7%	40.9%	11.1%	4.3%	1313
	COLLEGE+	47.0%	39.5%	10.2%	3.3%	784
1998	LT HIGH SCHOOL	47.4%	38.6%	9.8%	4.1%	252
	HIGH SCHOOL	45.4%	41.2%	9.8%	3.7%	1244
	COLLEGE+	53.4%	34.8%	9.6%	2.2%	776
2000	LT HIGH SCHOOL	40.5%	47.6%	8.3%	3.5%	264
	HIGH SCHOOL	43.1%	44.3%	9.3%	3.3%	1199
	COLLEGE+	51.2%	39.9%	6.3%	2.6%	730
2002	LT HIGH SCHOOL	57.5%	29.2%	9.6%	3.7%	122
	HIGH SCHOOL	47.6%	38.4%	10.7%	3.3%	585
	COLLEGE+	53.8%	35.9%	6.6%	3.7%	358
2004	LT HIGH SCHOOL	41.2%	41.1%	11.3%	6.4%	153
	HIGH SCHOOL	49.7%	36.0%	9.6%	4.7%	716
	COLLEGE+	55.2%	34.6%	6.7%	3.5%	551

SURVEY YEAR	EDUCATION	VERY SATISFIED	MOD. SATISFIED	A LITTLE DISSAT	VERY DISSATISFIED	Total
2006	LT HIGH SCHOOL	41.2%	40.4%	12.7%	5.7%	282
	HIGH SCHOOL	46.6%	41.0%	8.2%	4.2%	1118
	COLLEGE+	55.8%	34.1%	6.8%	3.3%	852
2008	LT HIGH SCHOOL	39.4%	42.4%	12.3%	6.0%	215
	HIGH SCHOOL	50.7%	36.6%	9.3%	3.4%	815
	COLLEGE+	57.3%	33.5%	7.7%	1.6%	568
2010	LT HIGH SCHOOL	46.7%	38.3%	11.5%	3.5%	214
	HIGH SCHOOL	47.7%	36.5%	11.0%	4.7%	784
	COLLEGE+	53.7%	34.9%	8.9%	2.4%	570
2012	LT HIGH SCHOOL	41.5%	36.8%	15.3%	6.4%	222
	HIGH SCHOOL	50.2%	37.2%	8.6%	4.0%	713
	COLLEGE+	54.3%	37.3%	7.0%	1.5%	591
2014	LT HIGH SCHOOL	43.6%	34.0%	12.9%	9.5%	209
	HIGH SCHOOL	46.6%	39.3%	8.9%	5.3%	994
	COLLEGE+	53.5%	36.1%	7.6%	2.8%	740
Total	LT HIGH SCHOOL	45.7%	38.3%	10.8%	5.1%	8028
	HIGH SCHOOL	46.2%	39.3%	10.3%	4.2%	23222
	COLLEGE+	52.7%	36.4%	8.0%	2.8%	12156

**Table 20.** IS LIFE EXCITING OR DULL

SURVEY YEAR	EDUCATION	EXCITING	ROUTINE	DULL	Total
1973	LT HIGH SCHOOL	32.7%	56.6%	10.7%	540
	HIGH SCHOOL	51.5%	46.6%	2.0%	721
	COLLEGE+	64.1%	35.9%	0.0%	210
1974	LT HIGH SCHOOL	34.2%	57.6%	8.3%	496
	HIGH SCHOOL	44.7%	52.9%	2.3%	717
	COLLEGE+	59.7%	37.5%	2.8%	230
1976	LT HIGH SCHOOL	32.1%	61.9%	6.0%	510
	HIGH SCHOOL	49.0%	48.8%	2.2%	742
	COLLEGE+	62.2%	37.8%	0.0%	221
1977	LT HIGH SCHOOL	31.9%	56.6%	11.5%	519
	HIGH SCHOOL	45.4%	50.6%	4.0%	740
	COLLEGE+	68.9%	28.6%	2.5%	237
1980	LT HIGH SCHOOL	35.3%	51.0%	13.7%	432
	HIGH SCHOOL	48.5%	49.8%	1.7%	763
	COLLEGE+	59.7%	38.6%	1.7%	264
1982	LT HIGH SCHOOL	34.7%	55.7%	9.6%	425
	HIGH SCHOOL	44.9%	51.2%	3.9%	801
	COLLEGE+	63.9%	35.5%	.6%	266
1984	LT HIGH SCHOOL	34.1%	55.4%	10.5%	383
	HIGH SCHOOL	47.1%	50.8%	2.1%	788
	COLLEGE+	65.6%	32.4%	2.0%	288
1985	LT HIGH SCHOOL	35.2%	51.7%	13.1%	400
	HIGH SCHOOL	47.4%	48.8%	3.8%	802
	COLLEGE+	63.6%	34.2%	2.3%	317
1987	LT HIGH SCHOOL	34.5%	56.9%	8.6%	329
	HIGH SCHOOL	46.2%	51.6%	2.2%	765
	COLLEGE+	55.9%	42.7%	1.4%	330
1988	LT HIGH SCHOOL	30.8%	59.4%	9.8%	238
	HIGH SCHOOL	46.9%	49.5%	3.6%	508
	COLLEGE+	62.8%	36.9%	.3%	207
1989	LT HIGH SCHOOL	25.6%	60.6%	13.8%	218
	HIGH SCHOOL	42.9%	54.4%	2.7%	557
	COLLEGE+	68.0%	30.7%	1.3%	241
1990	LT HIGH SCHOOL	22.2%	70.7%	7.1%	187
	HIGH SCHOOL	47.4%	48.8%	3.8%	489
	COLLEGE+	59.4%	38.4%	2.2%	220

SURVEY YEAR	EDUCATION	EXCITING	ROUTINE	DULL	Total
1991	LT HIGH SCHOOL	35.6%	56.9%	7.5%	192
	HIGH SCHOOL	42.3%	54.9%	2.8%	545
	COLLEGE+	58.0%	41.6%	.4%	239
1993	LT HIGH SCHOOL	35.0%	53.3%	11.7%	177
	HIGH SCHOOL	44.1%	50.4%	5.6%	570
	COLLEGE+	60.2%	38.6%	1.2%	310
1994	LT HIGH SCHOOL	34.3%	55.8%	9.9%	327
	HIGH SCHOOL	44.0%	52.9%	3.1%	1111
	COLLEGE+	64.6%	34.8%	.7%	568
1996	LT HIGH SCHOOL	38.7%	52.5%	8.9%	288
	HIGH SCHOOL	46.5%	49.2%	4.3%	1027
	COLLEGE+	65.2%	34.6%	.3%	577
1998	LT HIGH SCHOOL	27.7%	60.4%	12.0%	276
	HIGH SCHOOL	41.0%	54.4%	4.5%	981
	COLLEGE+	60.2%	37.7%	2.2%	606
2000	LT HIGH SCHOOL	29.4%	59.9%	10.7%	293
	HIGH SCHOOL	43.0%	53.3%	3.7%	990
	COLLEGE+	63.1%	34.9%	2.0%	545
2002	LT HIGH SCHOOL	46.8%	46.0%	7.2%	139
	HIGH SCHOOL	46.3%	50.3%	3.4%	479
	COLLEGE+	64.6%	33.5%	1.9%	291
2004	LT HIGH SCHOOL	42.1%	46.8%	11.1%	101
	HIGH SCHOOL	43.6%	54.3%	2.1%	469
	COLLEGE+	61.8%	35.3%	2.8%	299
2006	LT HIGH SCHOOL	42.6%	50.5%	6.8%	292
	HIGH SCHOOL	47.1%	47.1%	5.8%	1011
	COLLEGE+	61.0%	36.2%	2.7%	666
2008	LT HIGH SCHOOL	33.2%	57.9%	8.8%	187
	HIGH SCHOOL	44.0%	52.4%	3.7%	693
	COLLEGE+	59.0%	38.9%	2.1%	462
2010	LT HIGH SCHOOL	40.2%	50.6%	9.2%	183
	HIGH SCHOOL	48.4%	47.4%	4.2%	625
	COLLEGE+	61.9%	34.7%	3.4%	455
2012	LT HIGH SCHOOL	48.7%	43.3%	8.0%	183
	HIGH SCHOOL	49.6%	44.3%	6.1%	640
	COLLEGE+	58.4%	40.1%	1.5%	470
2014	LT HIGH SCHOOL	34.0%	54.7%	11.3%	219
	HIGH SCHOOL	48.6%	46.6%	4.7%	876
	COLLEGE+	61.6%	37.3%	1.1%	616

<b>SURVEY YEAR</b>	<b>EDUCATION</b>	<b>EXCITING</b>	<b>ROUTINE</b>	<b>DULL</b>	<b>Total</b>
Total	LT HIGH SCHOOL	34.2%	55.8%	9.9%	7535
	HIGH SCHOOL	46.0%	50.4%	3.6%	18411
	COLLEGE+	62.0%	36.4%	1.6%	9136

Figure 1. TRENDS IN GENERAL HAPPINESS

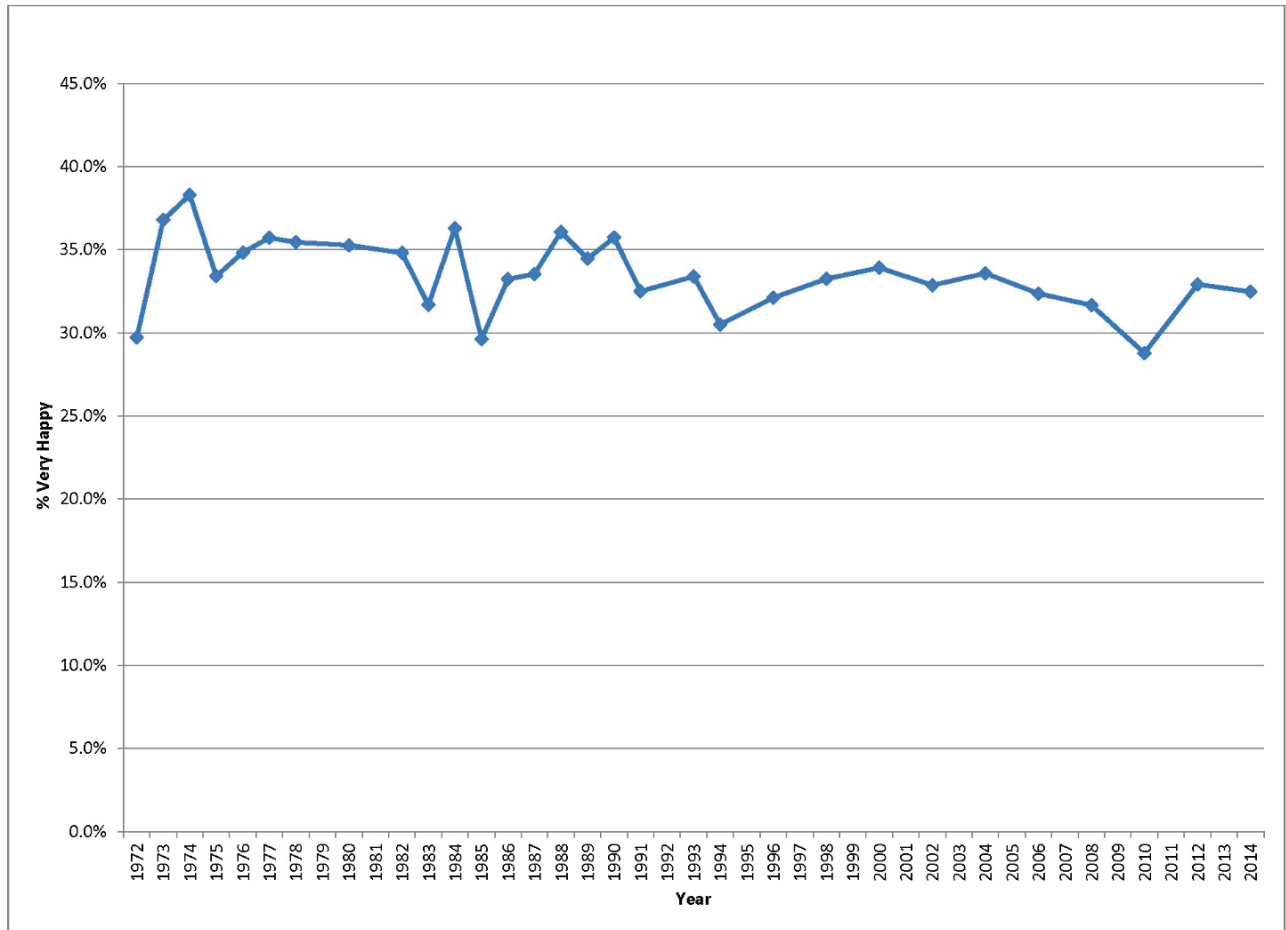




Figure 2. TRENDS IN MARITAL HAPPINESS

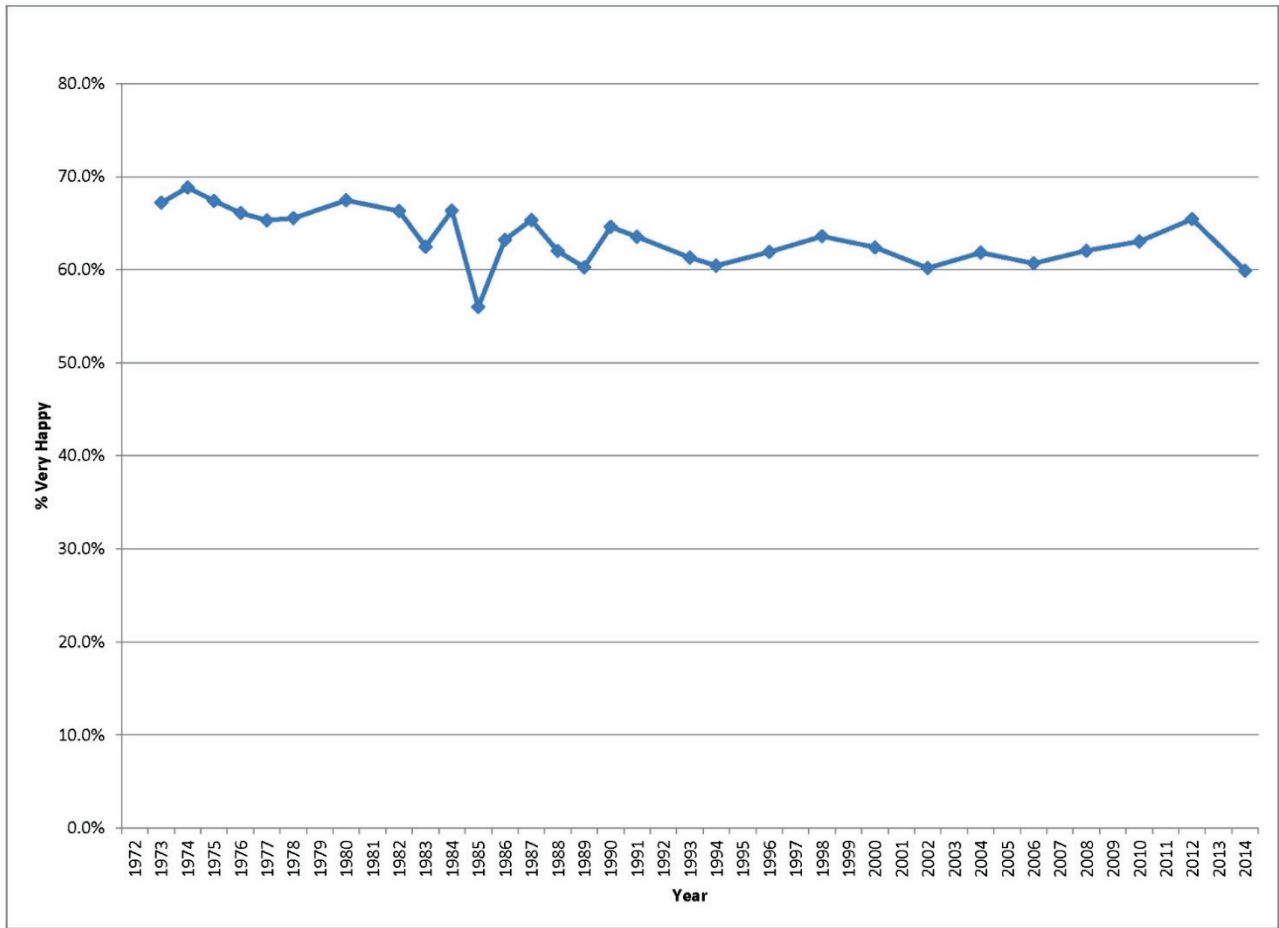


Figure 3. TRENDS IN FINANCIAL SATISFACTION

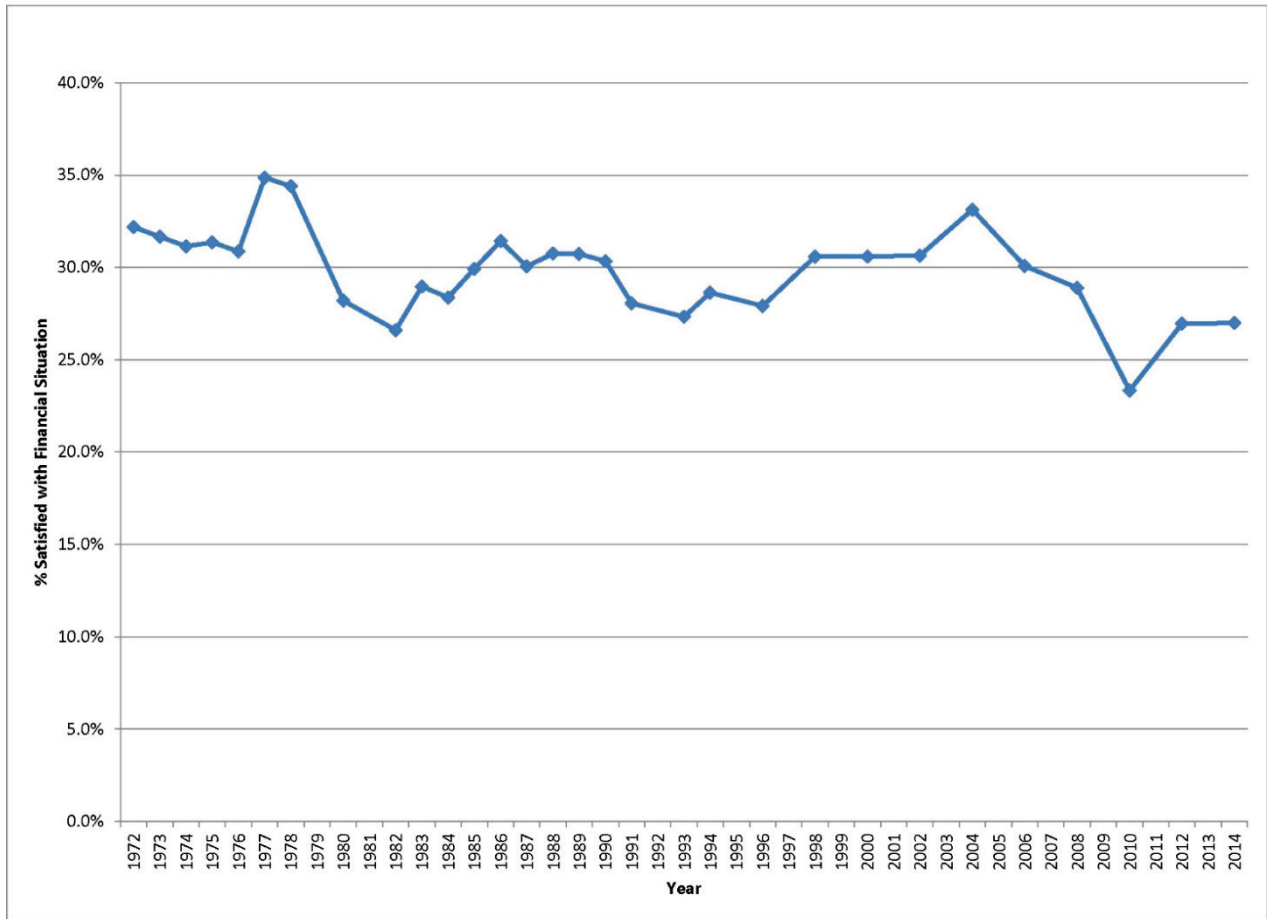


Figure 4. TRENDS IN JOB SATISFACTION

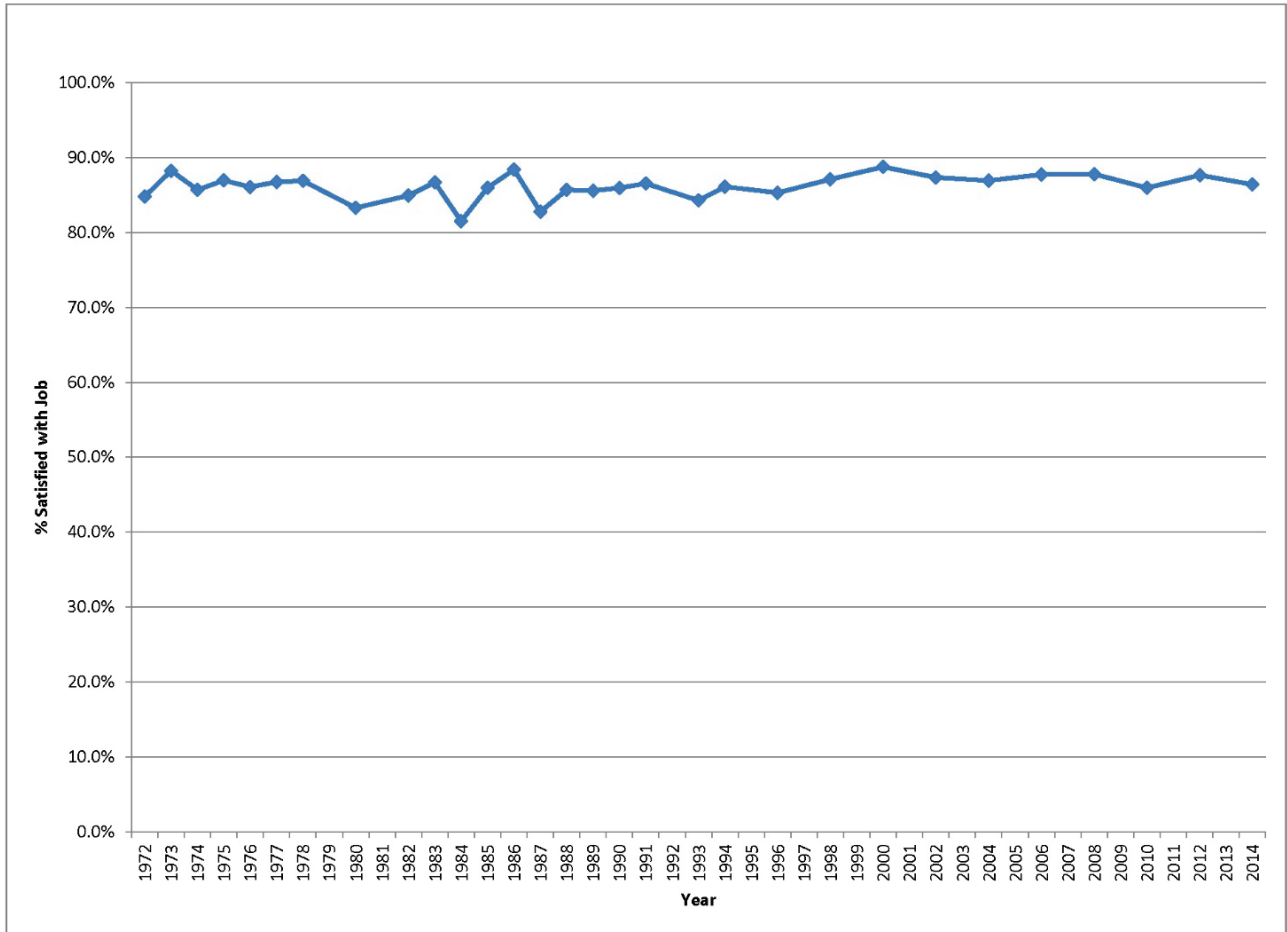
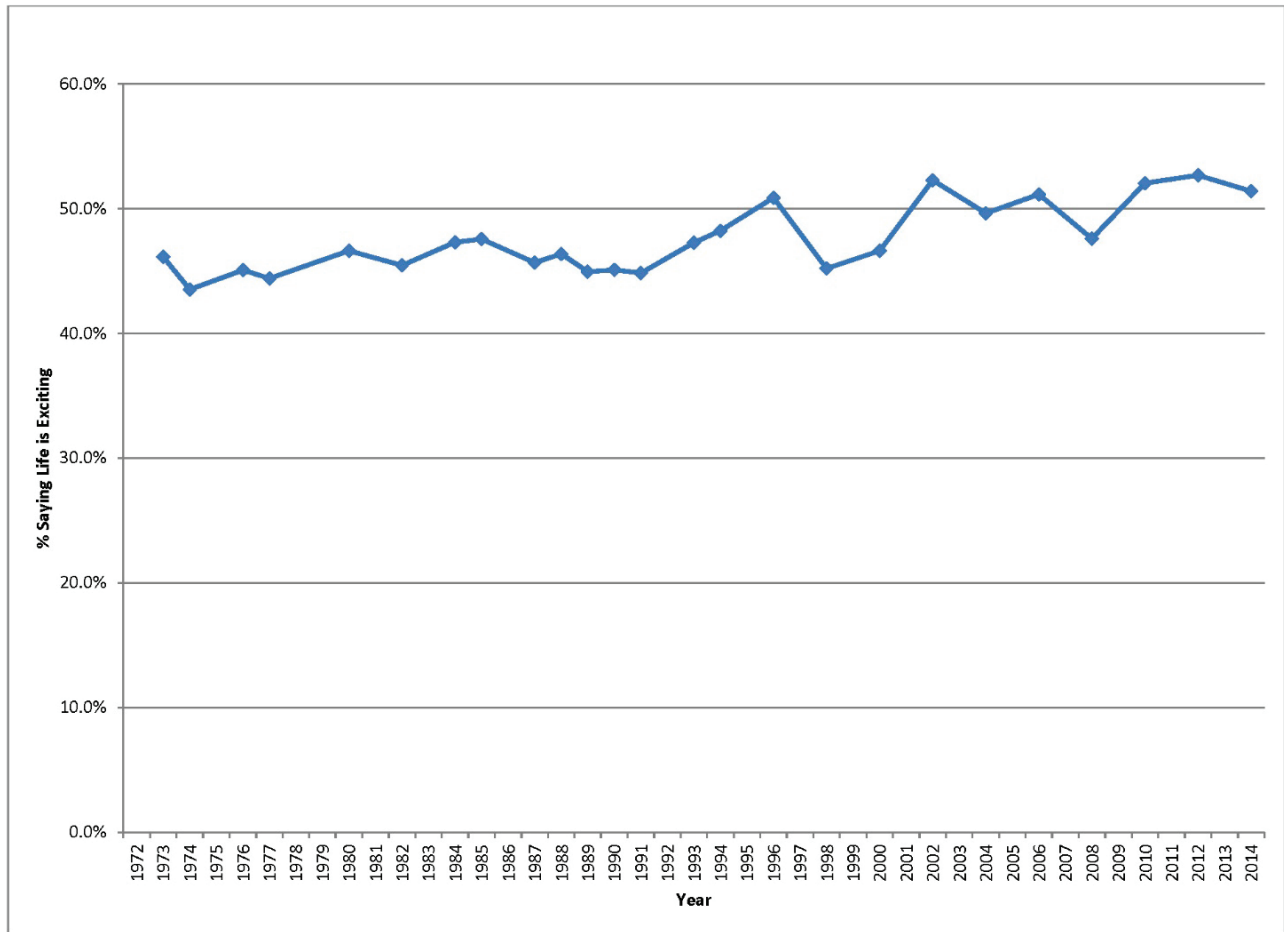


Figure 5. TRENDS IN LIFE SATISFACTION



## Appendix 1: Question Wordings

- HAPPY — Taken all together, how would you say things are these days, would you say that you are very happy, pretty happy, or not too happy?
- HAPMAR — If Married: Taking things all together, how would you describe your marriage? Would you say that your marriage is very happy, pretty happy, or not too happy?
- SATFIN — We are interested in how people are getting along financially these days. So far as you and your family are concerned, would you say that you are pretty well satisfied with your present financial situation, more or less satisfied, or not satisfied at all?
- SATJOB — If Employed or Keeping House: On the whole, how satisfied are you with the work you do, would you say you are very satisfied, moderately satisfied, a little dissatisfied, or very dissatisfied?
- LIFE — In general, do you find life exciting, routine, or dull?